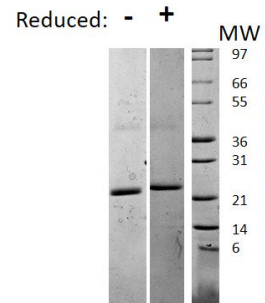
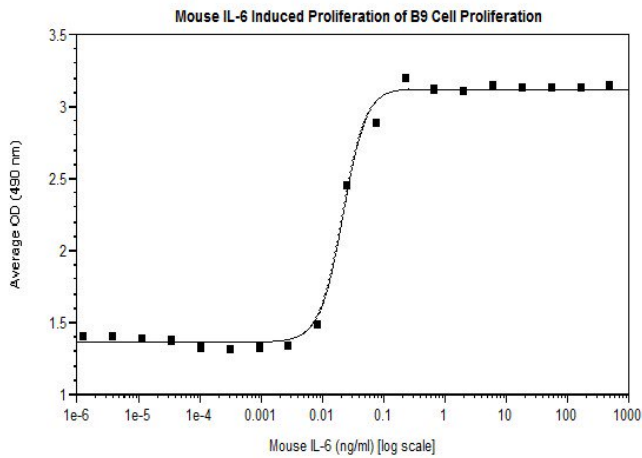


IL6

Recombinant Mouse Interleukin-6

Catalog No.	CRI130A CRI130B CRI130C	Quantity:	2 µg 10 µg 1.0 mg
Alternate Names:	IL-6, B-cell hybridoma growth factor, Interleukin HP-1		
Description:	IL-6 is an important cytokine that functions in inflammation and the maturation of B cells. In addition, it is an endogenous pyrogen capable of inducing fever in circumstances of autoimmune diseases or infections. The protein is primarily produced at sites of acute and chronic inflammation, where it is secreted into the serum and induces a transcriptional inflammatory response through interleukin 6 receptor, alpha. Interleukin-6 (IL-6) is a multifunctional protein that plays important roles in host defense, acute phase reactions, immune responses, and hematopoiesis.		
Gene ID:	16193		
UniProt ID:	P08505		
Source:	<i>E. coli</i>		
Molecular Weight:	21.9 kDa (188 aa) monomer		
Formulation:	Lyophilized from a sterile-filtered aqueous solution containing 0.1% Trifluoroacetic Acid (TFA).		
Purity:	>95% by reducing and non-reducing SDS-PAGE		
Endotoxin Level:	≤1 EU/µg of protein by kinetic LAL analysis		
Biological Activity:	ED ₅₀ ≤ 50 pg/ml as determined by the dose-dependent proliferation B8 cell line. This product also demonstrates a typical ED ₅₀ < 1 ng/ml for dose-dependent 7TD1 cell proliferation.		
Specific Activity:	≥ 2 x 10 ⁷ units/mg		
Amino Acid Sequence:	MFPTSQVRRG DFTEDTTPNR PVYTTSQVGG LITHVLWEIV EMRKELCNGN SDCMNDDAL AENNLKLPEI QRNDGCYQTG YNQEICLLKI SSGLLLEYHSY LEYMKNNLKD NKKDKARVLQ RDTETLIHIF NQEVKDLHKI VLPTPISNAL LTDKLESQKE WLRTKTIQFI LKSLEEFLLKV TLRSTRQT		
Reconstitution:	Centrifuge vial prior to opening. Add sterile 10 mM HCl to a concentration of 0.1 mg/ml. DO NOT VORTEX. Allow several minutes for complete reconstitution. Further dilution should be made in appropriate buffered solutions.		
Storage & Stability:	Store as supplied at -20°C to -80°C for up to 1 year. Upon reconstitution, prepare working aliquots and store at -20°C to -80°C. It is recommended that a carrier protein such as 0.1% HSA or BSA is added for long term storage.		
	Avoid repeated freeze-thaw cycles.		





Mouse IL-6

Figure: 1 ug in each lane (-) non-reducing conditions and (+) reducing conditions in a 4-20% Tris-Glycine gel, stained with Coomassie Blue. Mouse IL-6 has a predicted MW of 21.9 kDa.

NOT FOR HUMAN USE. FOR RESEARCH ONLY. NOT FOR DIAGNOSTIC OR THERAPEUTIC USE.



Cell Sciences®
65 Parker Street
Unit 11
Newburyport, MA 01950

Toll Free: 888-769-1246
Phone: 978-572-1070
Fax: 978-992-0298

E-mail: info@cellsciences.com
Website: www.cellsciences.com