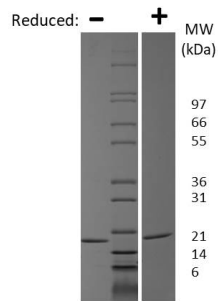


IL1A

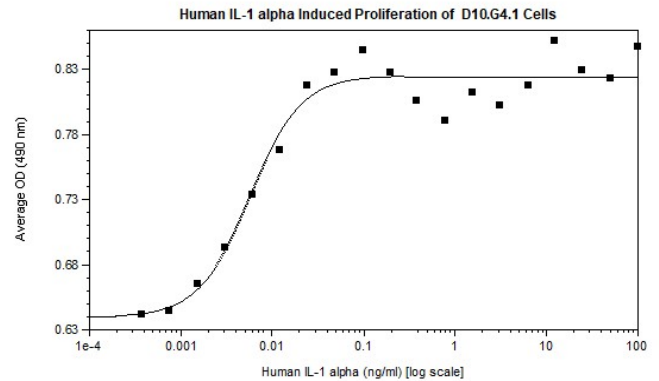
Recombinant Human Interleukin-1 alpha Animal Free

Catalog No.	CRI132A-AF CRI132B-AF CRI132C-AF	Quantity:	2 µg 10 µg 1.0 mg
Alternate Names:	IL1A, IL1F1, IL-1 alpha		
Gene ID:	3552		
Protein Accession No:	P01583		
Description:	Produced by activated macrophages, IL-1 stimulates thymocyte proliferation by inducing IL-2 release, B-cell maturation and proliferation, and fibroblast growth factor activity. IL-1 proteins are involved in the inflammatory response, being identified as endogenous pyrogens, and are reported to stimulate the release of prostaglandin and collagenase from synovial cells. IL-1 alpha and IL-1 beta have overlapping proinflammatory activities, to control fever induction, initiate rheumatoid arthritis and promote septic shock.		
Source:	<i>E. coli</i> , in an animal free facility, without animal-derived proteins		
Molecular Weight:	predicted 18.0 kDa, monomer (159 aa)		
Formulation:	Lyophilized from a sterile filtered solution of 10 mM sodium phosphate, pH 7.5		
Purity:	≥95% by reducing and non-reducing SDS-PAGE		
Endotoxin Level:	<1 EU/µg as determined by kinetic LAL		
Amino Acid Sequence:	SAPFSFLSNV KYNFMRIKY EFILNDALNQ SIIRANDQYL TAAALHNLDE AVKFDMGAYK SSKDDAKITV ILRISKTKLY VTAQDEDQPV LLKEMPEIPK TITGSETNLL FFWETHGTKN YFTSVAHPNL FIATKQDYWV CLAGGPPSIT DFQILENQA		
Biological Activity:	ED ₅₀ ≤ 50 pg/ml, determined by a proliferation assay using murine D10S cells.		
Specific Activity:	≥ 2.0 × 10 ⁷ units/mg		
Reconstitution:	Centrifuge vial prior to opening. Add sterile distilled water or aqueous buffer to a concentration of 0.1-1.0 mg/mL. Further dilution should be made in appropriate buffered solutions containing a carrier protein such as 0.1% BSA.		
Storage & Stability:	Stable, as supplied, short term at 2-8°C, at -20°C to -80°C 1 year. Upon reconstitution as directed, stable for up to 1 week at 2-8°C. For longer term, store in working aliquots below -20°C to -80°C for 3 months. Avoid repeated freeze/thaw cycles.		



Human IL-1 alpha / IL-1F1 Gel

Figure: 1 ug run under (-) non-reducing conditions and (+) reducing conditions in a 4-20% Tris-Glycine gel, stained with Coomassie Blue. Human IL-1 alpha / IL-1F1 is predicted to have a MW of 18 kDa.



NOT FOR HUMAN USE. FOR RESEARCH ONLY. NOT FOR DIAGNOSTIC OR THERAPEUTIC USE.



Cell Sciences®
65 Parker Street
Unit 11
Newburyport, MA 01950

Toll Free: 888-769-1246
Phone: 978-572-1070
Fax: 978-992-0298

E-mail: info@cellsciences.com
Website: www.cellsciences.com