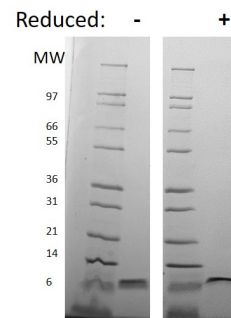
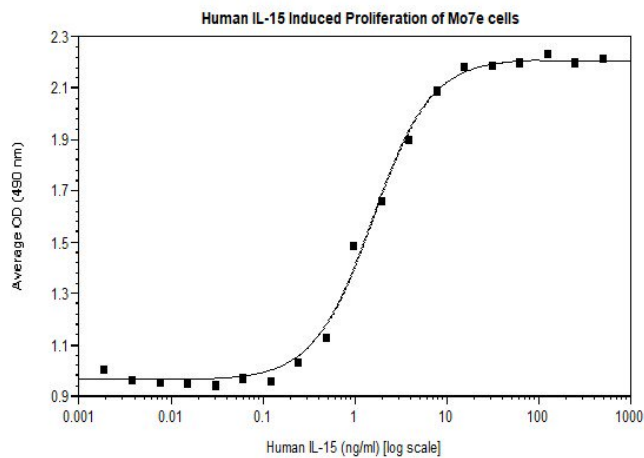


## IL15

### Recombinant Human IL-15, Animal Free

<b>Catalog No.</b>	CRI137A-AF CRI137B-AF CRI137C-AF	<b>Quantity:</b>	2 µg 10 µg 1.0 mg
<b>Alternate:</b>	IL-T		
<b>Description:</b>	Interleukin 15 (IL-15) is a widely expressed pro-inflammatory cytokine related to IL-2. IL-15 promotes activation of T cells, neutrophils and macrophages and is critical to dendritic cell function in several model systems. IL-15 has been shown to play a role in several inflammatory disorders, including rheumatoid arthritis, psoriasis and pulmonary inflammatory diseases. Emerging data suggest that IL-15 may serve as a good therapeutic target, as there appears to be a beneficial effect of IL-15 neutralization in models of psoriasis and diabetes.		
<b>Gene ID:</b>	3600		
<b>UniProtKB:</b>	P40933		
<b>Source:</b>	<i>E. coli</i> <b>Manufactured without Animal-derived products, in an Animal Free facility.</b>		
<b>Molecular Weight:</b>	Monomer, 12.9 kDa (115aa)		
<b>Formulation:</b>	Lyophilized from a 0.2µm filtered concentrated solution containing 10 mM sodium bicarbonate, pH 8.5		
<b>Purity:</b>	≥ 95% by reducing and non-reducing SDS-PAGE gels.		
<b>Endotoxin Level:</b>	≤1 EUs/µg by kinetic LAL		
<b>Biological Activity:</b>	ED <sub>50</sub> ≤ 5 ng/ml, determined by a proliferation assay using murine CTLL-2 cells. ED <sub>50</sub> ≤ 2 pg/ml, determined by a proliferation assay using MO7e cells.		
<b>Specific Activity:</b>	≥ 2.0 x 10 <sup>5</sup> units/mg by CTLL-2 cell proliferation. ~2.7 x 10 <sup>5</sup> IU/µg, which is calibrated against recombinant human IL-15 WHO International Standard (NIBSC code: 91/678) in MO7e cells.		
<b>Amino Acid Sequence:</b>	MNWIDVRYDL EKIESLIQSI HIDTTLYTDS DFHPSCKVTA MNCFLLELQV ILHEYSNMTL NETVRNVLYL ANSTLSSNKN VAESGCKECE ELEEKTFTEF LQSFIRIVQM FINTS		
<b>Reconstitution:</b>	<b>Centrifuge vial prior to opening.</b> Add sterile distilled water to a concentration of 0.1 mg/mL and gently pipette the solution up and down the sides of the vial. <b>DO NOT VORTEX.</b> Allow several minutes for reconstitution.		
<b>Storage &amp; Stability:</b>	<b>Upon receipt</b> , store at -20 °C to -80 °C for up to 1 year. <b>Upon reconstitution</b> store at 2 -8 °C for up to 1 month. <b>For long term storage</b> reconstitute in working aliquots containing 0.1% BSA and store at -20 °C to -80 °C. <b>Avoid repeated freeze-thaw cycles.</b>		





## Human IL-15

Figure: 1 ug in each lane (-) non-reducing conditions and (+) reducing conditions in a 4-20% Tris-Glycine gel, stained with Coomassie Blue. Human IL-15 is a protein with a predicted MW of 12.9 kDa.

**NOT FOR HUMAN USE. FOR RESEARCH ONLY. NOT FOR DIAGNOSTIC OR THERAPEUTIC USE.**



**Cell Sciences®**  
65 Parker Street  
Unit 11  
Newburyport, MA 01950

Toll Free: 888-769-1246  
Phone: 978-572-1070  
Fax: 978-992-0298

E-mail: [info@cellsciences.com](mailto:info@cellsciences.com)  
Website: [www.cellsciences.com](http://www.cellsciences.com)