

## IL2

### Recombinant Rat IL-2

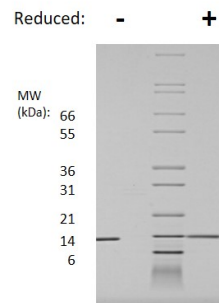
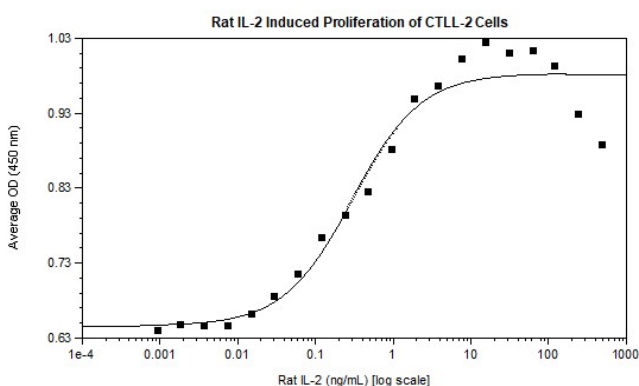
<b>Catalog No.</b>	CRI146A CRI146B CRI146C	<b>Quantity:</b>	5 µg 20 µg 1 mg
<b>Alternate Names:</b>	Interleukin-2, aldesleukin, T cell growth factor		
<b>Description:</b>	IL-2 is a powerful immunoregulatory lymphokine produced by T-cells in response to antigenic or mitogenic stimulation. It is expressed by CD4+ and CD8+ T cells, γδ T cells, B cells, dendritic cells, and eosinophils. IL-2/IL-2R signaling is required for T cell proliferation and other fundamental functions which are essential for the immune response. The receptor for IL-2 consists of three subunits (55 kDa IL2Rα, 75 kDa IL2Rβ, 64 kDa common gamma chain γc/IL2Rγ) that are present on the cell surface in varying preformed complexes.		
<b>Gene ID:</b>	116562		
<b>UniProt ID:</b>	P17108		
<b>Source:</b>	<i>E. coli</i>		
<b>Molecular Weight:</b>	15.6 kDa		
<b>Formulation:</b>	Lyophilized from a sterile-filtered aqueous solution containing 0.1% Trifluoroacetic acid (TFA).		
<b>Purity:</b>	>95 % by reducing and non-reducing SDS-PAGE		
<b>Endotoxin Level:</b>	≤1 EU/µg of protein by kinetic LAL analysis.		
<b>Biological Activity:</b>	ED <sub>50</sub> ≤ 2 ng/ml as determined by a cell proliferation assay using murine CTLL-2		
<b>Specific Activity:</b>	≥ 5.0 × 10 <sup>5</sup> U/mg		
<b>Amino Acid Sequence:</b>	MAPTSSPAKE TQQHLEQLLL DLQVLLRGID NYKNLKLPMML LTFKFYLPKQ ATELKHLQCL ENELGALQRV LDLTQSKSFH LEDAGNFISN IRVTVVKLKG SENKFECQFD DEPATVVEFL RRWIAICQSI ISTMTQ		
<b>Reconstitution:</b>	<b>Centrifuge vial prior to opening.</b> Add sterile 10 mM HCl to a concentration of 0.1 mg/ml. <b>DO NOT VORTEX.</b> Allow several minutes for complete reconstitution. Further dilutions should be made in appropriate buffered solutions.		



## Storage & Stability:

Store as supplied at -20°C to -80°C for up to 1 year. Upon reconstitution, prepare working aliquots and store at -20°C to -80°C. It is recommended that a carrier protein such as 0.1% HSA or BSA is added for long term storage.

**Avoid repeated freeze-thaw cycles.**



## Rat IL-2 Gel

Figure: 1 ug in each lane (-) non-reducing conditions and (+) reducing conditions in a 4-20% Tris-Glycine gel, stained with Coomassie Blue. Rat IL-2 has a predicted MW of 15.6 kDa.

**NOT FOR HUMAN USE. FOR RESEARCH ONLY. NOT FOR DIAGNOSTIC OR THERAPEUTIC USE.**



**Cell Sciences®**

65 Parker Street

Unit 11

Newburyport, MA 01950

Toll Free: 888-769-1246

Phone: 978-572-1070

Fax: 978-992-0298

E-mail: [info@cellsciences.com](mailto:info@cellsciences.com)

Website: [www.cellsciences.com](http://www.cellsciences.com)