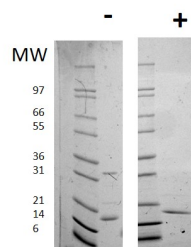


IL16

Recombinant Human Interleukin-16

Catalog No.	CRI163A CRI163B CRI163C	Quantity:	2 µg 10 µg 1 mg
Alternate Names:	IL-16, Lymphocyte chemoattractant factor, LCF		
Description:	Human Interleukin-16, cleaved from pro-Interleukin-16, has four isoforms. The IL16 gene is located on chromosome 15. Interleukin-16, the ligand for CD4, is produced by CD4+ and CD8+ T cells and functions as a chemoattractant for lymphocytes, monocytes, eosinophils, dendritic cells, and Langerhans cells. Additionally, IL-16 upregulates the expression of the interleukin 2 receptor (CD25), modulates T lymphocyte growth, and suppresses the replication of the human immunodeficiency virus (HIV) and simian immunodeficiency viruses (SIV). Human IL-16 shares 85% a.a. sequence identity with mouse IL-16.		
Concentration:	Q14005		
Gene ID:	3603		
Source:	<i>E. coli</i>		
Molecular Weight:	13.4 kDa (130 aa) monomer		
Formulation:	Lyophilized from a sterile filtered solution of 10 mM sodium phosphate, pH 7.5		
Purity:	≥ 95% by reducing and non-reducing SDS-PAGE		
Endotoxin Level:	< 1 EU/µg, determined by kinetic LAL analysis		
Biological Activity:	No data available at this time.		
Amino Acid Sequence:	MPDLNSSTD S AASASAASDV SVESTAEATV CTVTLEKMSA GLGFSLEGGK GSLHGD KPLT INRIFKGAAS EQSETVQPGD EILQLGGTAM QGLTRFEAWN I IKALPDGPV TIVIRRKSLQ SKETTAAGDS		
Reconstitution:	Centrifuge vial prior to opening. Add sterile distilled water to a concentration of 0.1 mg/mL and gently pipette the solution up and down the sides of the vial. DO NOT VORTEX. Allow several minutes for complete reconstitution.		
Storage & Stability:	Store as supplied at -20°C to -80°C for up to 1 year. Upon reconstitution, prepare working aliquots and store at -20°C to -80°C. It is recommended that a carrier protein such as 0.1% HSA or BSA is added for long term storage. Avoid repeated freeze-thaw cycles.		



Human IL-16

Figure: 1 ug under (+) reducing and (-) non-reducing conditions in a 4-20% Tris-Glycine gel, stained with Coomassie Blue. Human IL-16 is predicted to be 13.5 kDa.

NOT FOR HUMAN USE. FOR RESEARCH ONLY. NOT FOR DIAGNOSTIC OR THERAPEUTIC USE.



Cell Sciences®
65 Parker Street
Unit 11
Newburyport, MA 01950

Toll Free: 888-769-1246
Phone: 978-572-1070
Fax: 978-992-0298

E-mail: info@cellsciences.com
Website: www.cellsciences.com