

## IL2

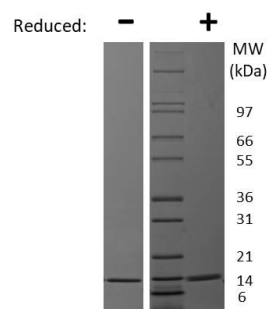
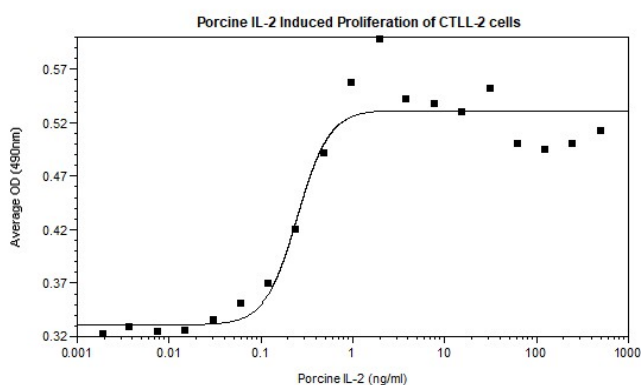
### Recombinant Porcine IL-2, Animal Free

<b>Catalog No.</b>	CRI185A-AF CRI185B-AF CRI185C-AF	<b>Quantity:</b>	5 µg 20 µg 1.0 mg
<b>Alternate Names:</b>	Interleukin-2, aldesleukin, T cell growth factor, involved in regulation of T-cell clonal expansion		
<b>Description:</b>	Interleukin 2 (IL-2) is an immunomodulatory cytokine that is produced by lymphocytes. IL-2 signals through the IL-2R receptor to induce activated T cell proliferation and promote T cell differentiation. IL-2 also stimulates the proliferation and differentiation of B cells, natural killer cells, monocytes, and macrophages.		
<b>Gene ID:</b>	396868		
<b>UniProt ID:</b>	P26891		
<b>Source:</b>	<i>E. coli</i> <b>Manufactured without animal-derived reagents in an Animal Free facility.</b>		
<b>Molecular Weight:</b>	15.3 kDa (135 aa).		
<b>Formulation:</b>	Lyophilized from a sterile (0.2 micron) filtered aqueous solution containing 10 mM sodium phosphate, pH 7.5		
<b>Purity:</b>	≥95% as determined by reducing and non-reducing SDS-PAGE.		
<b>Endotoxin Level:</b>	< 1 EU/µg determined by kinetic LAL analysis		
<b>Biological Activity:</b>	ED <sub>50</sub> ≤ 1.0 ng/ml, determined by dose-dependent proliferation of mouse CTLL-2 cells.		
<b>Specific Activity:</b>	1.0 x 10 <sup>6</sup> units/ml.		
<b>Amino Acid Sequence:</b>	MAPTSSSTKN TKKQLEPLLL DLQLLLKEVK NYENADLSRM LTFKFYMPKQ ATELKHLQCL VEELKALEGV LNLGQSKNSD SANIKESMNN INVTVLELKG SETSFKCEYD DETVTAVEFL NKWITFCQSI YSTLT		
<b>Reconstitution:</b>	<b>Centrifuge vial prior to opening.</b> Add sterile distilled water to a concentration of 0.1 mg/mL and gently pipet the solution up and down the sides of the vial. <b>DO NOT VORTEX.</b> Allow several minutes for reconstitution. A small amount of precipitate may be seen.		

## Storage & Stability:

Store as supplied at -20°C to -80°C for up to 1 year. Upon reconstitution, prepare working aliquots and store at -20°C to -80°C. It is recommended that a carrier protein such as 0.1% HSA or BSA is added for long term storage.

**Avoid repeated freeze-thaw cycles.**



## Porcine IL-2 Gel

Figure: 1 ug run under (-) non-reducing conditions and (+) reducing conditions in a 4-20% Tris-Glycine gel, stained with Coomassie Blue. Porcine IL-2 is predicted to have a MW of 15.3 kDa.

**NOT FOR HUMAN USE. FOR RESEARCH ONLY. NOT FOR DIAGNOSTIC OR THERAPEUTIC USE.**



**Cell Sciences®**

65 Parker Street

Unit 11

Newburyport, MA 01950

Toll Free: 888-769-1246

Phone: 978-572-1070

Fax: 978-992-0298

E-mail: [info@cellsciences.com](mailto:info@cellsciences.com)

Website: [www.cellsciences.com](http://www.cellsciences.com)