

IL22

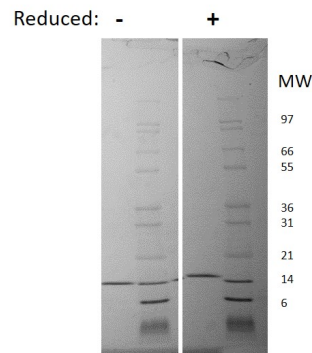
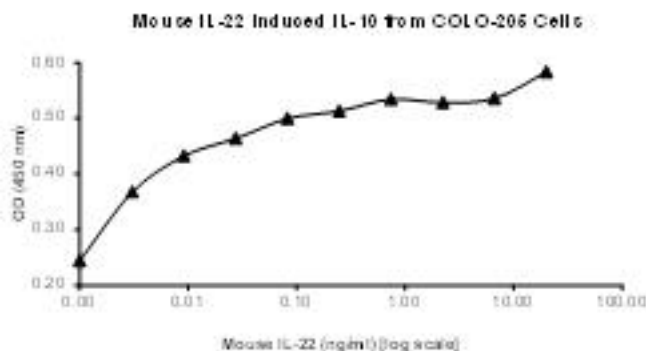
Recombinant Mouse IL-22, Animal Free

Catalog No.	CRI227A-AF CRI227B-AF CRI227C-AF	Quantity:	2 µg 10 µg 1 mg
Alternate Names:	IL-10-related T-cell-derived-inducible factor, ILTIF, IL-TIF, TIFa		
Description:	IL-22 belongs to the IL-10 family of regulatory cytokines which includes IL-10, IL-19, IL-20, IL-22, IL-24, and IL-26. Members of this family share partial homology in their amino acid sequences, but they are dissimilar in their biological functions. Produced by T lymphocytes and dendritic cells, IL-10 contributes to the inflammatory response in vivo. IL-22 signals through CRF2-4 and IL-22. Along with IL-17, it is rapidly produced by splenic LTi-like cells and can be also produced by Th17 cells and likely plays a role in the coordinated response of both adaptive and innate immune systems. Mouse interleukin -22 has approximately 81% and 92% amino acid sequence identity with human and rat IL-22.		
Gene ID:	50929		
UniProt ID:	Q9JJY9		
Source:	<i>E. coli</i>		
Molecular Weight:	Monomer, 16.8 kDa (147 aa)		
Formulation:	Lyophilized from a sterile (0.2 micron) filtered aqueous solution containing 0.1% Trifluoroacetic Acid (TFA)		
Purity:	≥ 95 % by reducing and non-reducing SDS-PAGE		
Endotoxin Level:	< 1 EU/µg, by kinetic LAL method.		
Biological Activity:	ED50 ≤1 ng/ml, determined by dose-dependent induction of IL-10 secretion in human COLO 205 cells.		
Specific Activity:	≥ 1.0 × 10 ⁶ U/mg		
Amino Acid Sequence:	MLPVNTRCKL EVSNFQQPYI VNRTFMLAKE ASLADNNTDV RLIGEKLFRRG VSAKDQCYLM KQVLNFTLED VLLPQSDRFQ PYMQEVPFPL TKLSNQLSSC HISGDDQNIQ KNVRRLKETV KKLGESGEIK AIGELDLLFM SLRNACV		
Reconstitution:	Centrifuge vial prior to opening. Add sterile distilled water or aqueous buffer to a concentration of 0.1-1.0 mg/ml. Further dilution should be made in appropriate buffered solutions.		

Storage & Stability:

The lyophilized protein is stable at 2-8°C. Upon receipt, store at -20°C to -80°C for up to 1 year. After reconstitution, the preparation is stable for up to one week at 2-8°C. For maximal stability, apportion the reconstituted preparation into working aliquots and store at -20°C to -80°C. For long term storage of reconstituted protein, it is recommended that a carrier protein such as 0.1% BSA or HSA be added. This depends on the particular application. **Avoid repeated freeze/thaw cycles.**

Figure 1: Increasing amounts of Mouse IL-22 (starting at 20 ng/ml) was added to COLO-205 cells. After 4 days, IL-10 in the supernatant was analyzed via ELISA.



Mouse IL-22

Figure: 1 ug in each lane (-) non-reducing conditions and (+) reducing conditions in a 4-20% Tris-Glycine gel, stained with Coomassie Blue. Mouse IL-22 is a protein with a predicted MW of 16.8 kDa.

NOT FOR HUMAN USE. FOR RESEARCH ONLY. NOT FOR DIAGNOSTIC OR THERAPEUTIC USE.



Cell Sciences®
65 Parker Street
Unit 11
Newburyport, MA 01950

Toll Free: 888-769-1246
Phone: 978-572-1070
Fax: 978-992-0298

E-mail: info@cellsciences.com
Website: www.cellsciences.com