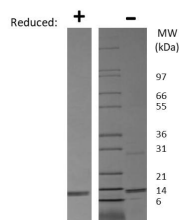


IL31

Recombinant Mouse Interleukin 31, Animal Free

Catalog No.	CRI228A-AF CRI228B-AF CRI228C-AF CRI228D-AF	Quantity:	2 µg 10 µg 1.0 mg 100 µg
Alternate Names:	IL-31		
Description:	Interleukin-31 (IL-31) is an immunoregulatory cytokine that is mainly expressed by activated TH2 cells. IL-31 signals through a heterodimer receptor consisting of the IL-31 Receptor (IL-31RA) and the oncostain receptor (OSMR), which are expressed on monocytes, epithelial cells, and keratinocytes. IL-31 promotes allergic reactions and inflammatory skin diseases.		
UniProt ID:	Q6EAL8		
Gene ID:	76399		
Source:	<i>E. coli</i> Manufactured without Animal-derived products, in an Animal Free facility.		
Molecular Weight:	15.7 kDa (141 aa)		
Formulation:	Lyophilized from a sterile (0.2 micron) filtered aqueous solution containing 10 mM sodium phosphate, pH 7.5		
Purity:	≥ 95%, by reducing and non-reducing SDS-PAGE.		
Endotoxin Level:	≤ 1 EU/µg, by kinetic LAL analysis.		
Biological Activity:	This product demonstrates dose dependent production of IL-8 from human PBMCs, detected by ELISA. Typical ED ₅₀ < 25 ng/mL.		
Amino Acid Sequence:	MTCSLSFGAP ISKEDLRIT DLLKQESQDL YNNYSIKQAS GMSADESIQL PCFSLDREAL TNISVIAHL EKVVLSENT VDTSWVIRWL TNISCFNPLN LNISVPGNTD ESYDCKVFVL TVLKQFSNCM AELQAKDNTT C		
Reconstitution:	Centrifuge vial prior to opening. When reconstituting the product, gently pipet and wash down the sides of the vial to ensure full recovery of the protein into solution. It is recommended to reconstitute the lyophilized product with sterile water at a concentration of 0.1 mg/mL, which can be further diluted into other aqueous solutions.		
Storage & Stability:	Store as supplied at -20°C to -80°C. Upon reconstitution, prepare working aliquots and store at -20°C -80°C. It is recommended that a carrier protein (0.1% HSA or BSA) is added for long term storage. Please note that the addition of any carrier protein into this product may produce unwanted endotoxin. This depends upon the particular application employed. Avoid repeated freeze-thaw cycles.		





Mouse IL-31 Gel

Figure: 1 ug run under (-) non-reducing conditions and (+) reducing conditions in a 4-20% Tris-Glycine gel, stained with Coomassie Blue. Mouse IL-31 is predicted to have a MW of 15.7 kDa.

NOT FOR HUMAN USE. FOR RESEARCH ONLY. NOT FOR DIAGNOSTIC OR THERAPEUTIC USE.



Cell Sciences®
65 Parker Street
Unit 11
Newburyport, MA 01950

Toll Free: 888-769-1246
Phone: 978-572-1070
Fax: 978-992-0298

E-mail: info@cellsciences.com
Website: www.cellsciences.com