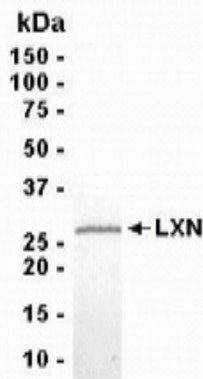


LXN

Recombinant Human Latexin

| | | | |
|---------------------------------|--|------------------|-------|
| Catalog No. | CRL211 | Quantity: | 50 µg |
| Alternate Names: | Latexin, Endogenous carboxypeptidase inhibitor, ECI, Protein MUM, Tissue carboxypeptidase inhibitor, TCI | | |
| Description: | Strongly similar to rat latexin and may be a tissue carboxypeptidase inhibitor. This gene encodes the only known protein inhibitor of zinc-dependent metallocarboxypeptidases. | | |
| UniProt ID: | Q9BS40 | | |
| Gene ID: | 56925 | | |
| Source: | <i>E. coli</i> | | |
| Molecular Weight: | 25.5 kDa (aa 1-222) | | |
| Formulation: | 10 mM Tris, pH 8.0 containing 0.1% Triton X-100 and 0.002% NaN3 | | |
| Purity: | 95% by SDS-PAGE | | |
| Applications: | Western blot, ELISA, Mass Spectrometry | | |
| Storage & Stability: | Store as supplied at -20°C to -80°C for up to 1 year. Upon initial thaw, prepare working aliquots and store at -20°C to -80°C. Avoid repeated freeze-thaw cycles. | | |

4-20% gradient SDS-PAGE with Coomassie blue.



NOT FOR HUMAN USE. FOR RESEARCH ONLY. NOT FOR DIAGNOSTIC OR THERAPEUTIC USE.