

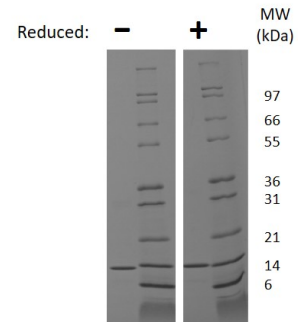
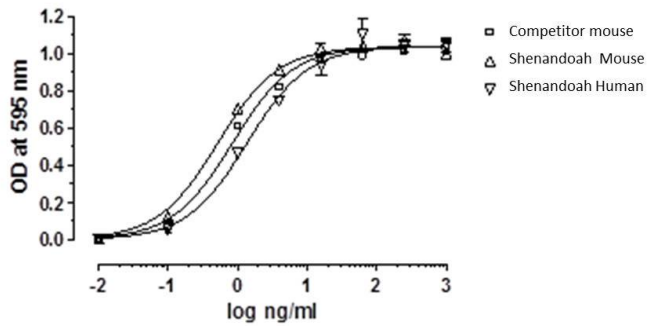
Lep

## Recombinant Mouse Leptin, Animal Free

<b>Catalog No.</b>	CRL301A-AF CRL301B-AF CRL301C-AF	<b>Quantity:</b>	200 µg 1.0 mg 5 mg
<b>Alternate Names:</b>	OB protein, Obesity protein, OBS, Obesity factor		
<b>Description:</b>	<p>Leptin a protein that is thought to have a critical role in the physiologic regulation of body weight via its capacity to inhibit food intake and stimulate energy expenditure. Leptin also has thermogenic actions and regulates enzymes of fatty acid oxidation. Severe hereditary obesity in rodents and humans can be caused by defects in leptin production. These functions include the regulation of hematopoiesis, angiogenesis, wound healing, inflammation, and immune responses. Recombinant mouse Leptin is a non-glycosylated protein, containing 147 amino acids.</p> <p><b>Made without animal-derived components in an animal-free facility.</b></p>		
<b>UniProt ID:</b>	P41160		
<b>Gene ID:</b>	16846		
<b>Source:</b>	<i>E. coli</i>		
<b>Molecular Weight:</b>	16.1 kDa (147 aa) monomer		
<b>Formulation:</b>	Lyophilized from a sterile (0.2 micron) filtered aqueous solution containing 10 mM sodium phosphate, pH 7.5		
<b>Purity:</b>	≥ 95.0% by Reducing and Non-reducing SDS-PAGE		
<b>Endotoxin Level:</b>	≤ 1 EU/µg by kinetic LAL analysis		
<b>Biological Activity:</b>	This product demonstrates dose-dependent cell proliferation using Ba/F3 cells.		
<b>Amino Acid Sequence:</b>	MVPIQKVQDD TKTLIKTIVT RINDISHTQS VSAKQRTVGL DFIPGLHPIL SLSKMDQTLA VYQQVLTSLP SQNVLQIAND LENLRDLLHL LAFSKSCSLP QTSGQLQKPES LDGVLEASLY STEVVALSRL QGSLQDILQQ LDVSPEC		
<b>Reconstitution:</b>	<p><b>Centrifuge vial prior to opening.</b> When reconstituting the product, gently pipet and wash down the sides of the vial to ensure full recovery of the protein into solution. It is recommended to reconstitute the lyophilized product with sterile <b>20 mM HCl</b> at a concentration of 0.1 mg/mL, which can be further diluted into other aqueous solutions.</p>		
<b>Storage &amp; Stability:</b>	<p>Store as supplied at -20°C to -80°C for up to 1 year. Upon reconstitution, prepare working aliquots and store at -20°C to -80°C. It is recommended that a carrier protein such as 0.1% HSA or BSA is added for long term storage.</p> <p><b>Avoid repeated freeze-thaw cycles.</b></p>		



## Mouse Leptin Induced Proliferation of Baf/3 Cells



### Mouse Leptin Gel

Figure: 1 ug run under (-) non-reducing conditions and (+) reducing conditions in a 4-20% Tris-Glycine gel, stained with Coomassie Blue. Mouse Leptin has a predicted MW of 16.1 kDa.

**NOT FOR HUMAN USE. FOR RESEARCH ONLY. NOT FOR DIAGNOSTIC OR THERAPEUTIC USE.**



**Cell Sciences®**  
65 Parker Street  
Unit 11  
Newburyport, MA 01950

Toll Free: 888-769-1246  
Phone: 978-572-1070  
Fax: 978-992-0298

E-mail: [info@cellsciences.com](mailto:info@cellsciences.com)  
Website: [www.cellsciences.com](http://www.cellsciences.com)