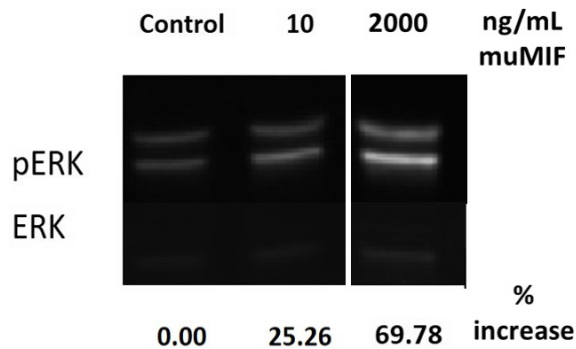


Mif

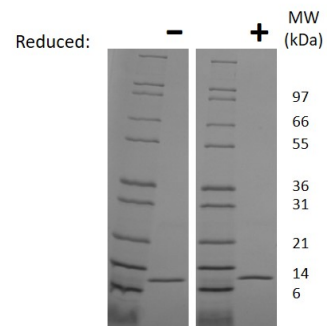
Recombinant Mouse MIF

Catalog No.	CRM433A CRM433B CRM433C	Quantity:	5 µg 100 µg 1 mg
Alternate Names:	Macrophage migration inhibitory factor, delayed early response protein 6, DER6, glycosylation inhibiting factor, GIF, L-dopamine isomerase.		
Description:	Macrophage migration inhibitory factor (MIF) is a pro-inflammatory lymphokine that functions during cell-mediated immunity. MIF promotes fibroblast migration by inducing interleukin 1 (IL-1), interleukin 8 (IL-8), and matrix metalloproteinase (MMP) expression. In interferon-gamma-activated macrophages, MIF stimulates nitric oxide (NO) production and tumor necrosis factor alpha (TNF-α) secretion.		
Gene ID:	17319		
UniProt ID:	P34884		
Source:	<i>E. coli</i>		
Molecular Weight:	Monomer, 12.5 kDa (115 aa)		
Formulation:	Lyophilized from a sterile-filtered solution containing 10 mM sodium phosphate, pH 7.5		
Purity:	≥95% by reducing and non-reducing SDS-PAGE		
Endotoxin Level:	≤ 0.1 EU/µg by kinetic LAL analysis		
Biological Activity:	Activity determined by ERK pathway activation in RAW cells, detected via Western Blot		
Amino Acid Sequence:	MPMFIVNTNV PRASVPEGFL SELTQQLAQA TGKPAQYIAV HVVPDQLMTF SGTNDPCALC SLHSIGKIGG AQNRNYSKLL CGLLSDRLHI SPDRVYINYY DMNAANVGWN GSTFA		
Reconstitution:	Centrifuge vial prior to opening. Add sterile distilled water to reconstitute to a recommended concentration of 0.1 mg/mL and gently pipet solution up and down sides of vial. DO NOT VORTEX. Allow several minutes for reconstitution. A small amount of precipitate may be seen. □		
Storage & Stability:	Upon receipt , store as supplied at -20°C to -80°C for up to 1 year. Upon reconstitution , the preparation is stable for up to one month at 2-8°C. For long term storage , reconstitute in working aliquots in 0.1% BSA solution and store at -80°C. Avoid repeated freeze-thaw cycles. □		

Mouse MIF Induced P-ERK in RAW 264.7 cells



NOT FOR HUMAN USE. FOR RESEARCH ONLY. NOT FOR DIAGNOSTIC OR THERAPEUTIC USE.



Mouse MIF Gel

Figure: 1 ug run under (-) non-reducing conditions and (+) reducing conditions in a 4-20% Tris-Glycine gel, stained with Coomassie Blue. Mouse MIF has a predicted MW of 12.5 kDa.



Cell Sciences®
65 Parker Street
Unit 11
Newburyport, MA 01950

Toll Free: 888-769-1246
Phone: 978-572-1070
Fax: 978-992-0298

E-mail: info@cellsciences.com
Website: www.cellsciences.com