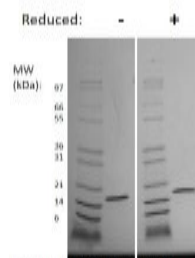


**IL36g**

## Mouse IL-36 gamma

<b>Catalog No.</b>	CRM435A CRM435B CRM435C	<b>Quantity:</b>	5 µg 100 µg 1 mg
<b>Alternate Names:</b>	Interleukin-36 gamma, Interleukin-1 family member 9, IL-1F9, IL-1 epsilon		
<b>Description:</b>	Interleukin 36 gamma (IL-36 γ) is a member of the interleukin 1 (IL-1) cytokine family and protects against pathogens in the skin, lung, and stomach epithelial barriers. IL-36 γ binds the interleukin-1 receptor accessory protein (IL-1RAcP) and the orphan IL-1R-related protein 2 (IL-1Rrp2) receptors to activate NF-κB and MAP kinase signaling pathways, resulting in the induced production of inflammatory cytokines and chemokines.		
<b>Gene ID:</b>	215257		
<b>UniProt ID:</b>	Q8R460		
<b>Source:</b>	<i>E. coli</i>		
<b>Molecular Weight:</b>	17.5 kDa (153 aa)		
<b>Formulation:</b>	Lyophilized from a sterile-filtered solution containing 0.1% Trifluoroacetic (TFA)		
<b>Purity:</b>	≥95% by reducing and non-reducing SDS-PAGE		
<b>Endotoxin Level:</b>	≤1 EU/µg by kinetic LAL analysis		
<b>Amino Acid Sequence:</b>	MGRETPDFGE VFDLDQQVWI FRNQALVTVP RSHRVTPVSV TILPCKYPES LEQDKGIAIY LGIQNPDKCL FCKEVNGHPT LLLKEEKILD LYHHPEPMKP FLFYHTRTGG TSTFESVAFP GHYIASSKTG NPIFLTSSKG EYNNINFNLD IKS		
<b>Reconstitution:</b>	<b>Centrifuge vial prior to opening.</b> Add sterile distilled water to a concentration of 0.1 mg/mL and gently pipetting the solution up and down the sides of the vial. <b>DO NOT VORTEX.</b> Allow several minutes for reconstitution. A small amount of visible precipitate can be expected. A 10% overfill has been added to the total material vialled to compensate for this loss.		
<b>Storage &amp; Stability:</b>	<b>Upon receipt</b> , store as supplied at -20°C to -80°C for up to 1 year. <b>Upon reconstitution</b> , the preparation is stable for up to one month at 2-8°C. <b>For long term storage</b> , reconstitute in working aliquots in 0.1% BSA solution and store at -80°C. <b>Avoid repeated freeze-thaw cycles.</b>		





**Mouse IL-36 gamma Gel**

Figure: 1 ug run under (-) non-reducing and (+) reducing conditions in a 4-20% Tris-Glycine gel, stained with Coomassie Blue. Mouse IL-36 gamma is predicted to have a MW of 17.5 kDa.

**NOT FOR HUMAN USE. FOR RESEARCH ONLY. NOT FOR DIAGNOSTIC OR THERAPEUTIC USE.**