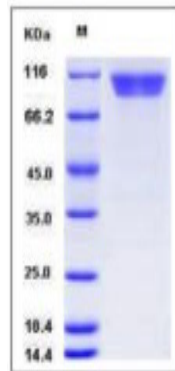


## Mcam

### Recombinant Mouse CD146 / MUC18 (His Tag)

<b>Catalog No.</b>	CRM698A-His CRM698B-His	<b>Quantity:</b>	10 µg 20 µg
<b>Alternate Names:</b>	Cell surface glycoprotein MUC18, Gicerin, Melanoma cell adhesion molecule, Melanoma-associated antigen MUC18, CD146		
<b>Description:</b>	The CD146 antigen is an integral membrane glycoprotein belonging to the immunoglobulin superfamily. CD146 contains the characteristic immunoglobulin-like domains (V-V-C2-C2-C2), a transmembrane region and a short cytoplasmic tail. The CD146 expression is detected in endothelial cells in vascular tissue throughout the body, and plays a role in cell adhesion, as well as in cohesion of the endothelial monolayer at intercellular junctions in vascular tissue. As a Ca <sup>2+</sup> -independent cell adhesion molecule involved in heterophilic cell to cell interactions and a surface receptor, CD146 triggers tyrosine phosphorylation of FYN and PTK2 and subsequently induced signal transduction, proteolysis, or immune recognition. This protein is also expressed predominantly on metastatic lesions and advanced primary tumors, and thus has been suggested to play an important role in tumor progression and the development of metastasis in certain human carcinomas.		
<b>UniProt ID:</b>	Q8R2Y2-1		
<b>Protein Construction:</b>	A DNA sequence encoding the mouse MUC18 extracellular domain (Met 1-Val 563) was expressed, fused with a C-terminal polyhistidine tag.		
<b>Source:</b>	HEK293 Cells		
<b>Formulation:</b>	Lyophilized from sterile PBS, pH 7.4 Normally 5 % - 8 % trehalose, mannitol and 0.01% Tween80 are added as protectants before lyophilization.		
<b>Molecular Weight:</b>	The secreted rmMUC18 consists of 551 aa with a predicted MW of 61.3 kDa and migrates at ~ 90-100 kDa in SDS-PAGE under reducing conditions, due to glycosylation.		
<b>Purity:</b>	> 98 % as determined by SDS-PAGE.		
<b>Endotoxin Level:</b>	< 1.0 EU per µg of the protein as determined by the LAL method		
<b>Biological Activity:</b>	Testing in progress		
<b>Predicted N-terminal:</b>	Val 24		
<b>Reconstitution:</b>	<b>Centrifuge vial prior to opening.</b> Add sterile distilled water to a concentration of 0.1 mg/mL and gently pipette the solution up and down the sides of the vial. <b>DO NOT VORTEX.</b> Allow several minutes for complete reconstitution.		
<b>Storage &amp; Stability:</b>	Stable for up to 1 year from date of receipt at -20°C to -80°C After reconstitution, store working aliquots at -20°C to -80°C. <b>Avoid repeated freeze-thaw cycles.</b>		

SDS-PAGE



NOT FOR HUMAN USE. FOR RESEARCH ONLY. NOT FOR DIAGNOSTIC OR THERAPEUTIC USE.



**Cell Sciences®**  
65 Parker Street  
Unit 11  
Newburyport, MA 01950

Toll Free: 888-769-1246  
Phone: 978-572-1070  
Fax: 978-992-0298

E-mail: [info@cellsciences.com](mailto:info@cellsciences.com)  
Website: [www.cellsciences.com](http://www.cellsciences.com)