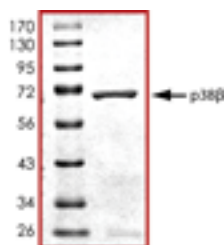


MAPK11

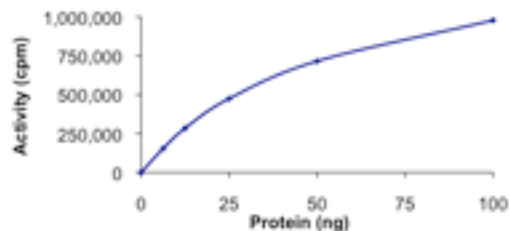
Recombinant Human MAPK11/p38 beta, Active

Catalog No.	CRP101A CRP101B	Quantity:	5 µg 10 µg
Alternate Names:	Mitogen-Activated Protein Kinase 11, MAP kinase p38 beta, p38b, p38-2, Stress-activated protein kinase 2b, SAPK2b		
Description:	MAPK11 is a member of the p38 MAP kinase family and is activated by both proinflammatory cytokines and environmental stress. The MAPK11 is activated through its phosphorylation by MAP kinase kinases (MKKs), preferably by MKK6. Transcription factor ATF2/CREB2 has been shown to be a substrate of this kinase. Alternatively spliced transcript variants encoding the same protein have been observed.		
UniProt ID:	Q15759		
Gene ID:	5600		
Tag:	N-terminal GST		
Concentration:	0.1 mg/ml		
Source:	Sf9 insect cells using baculovirus		
Molecular Weight:	~ 71 kDa		
Formulation:	50 mM Tris-HCl, 150 mM NaCl, 10 mM glutathione, 0.25 mM DTT, 0.1 mM EDTA, 0.1 mM PMSF, 25% Glycerol, pH 7.5		
Purity:	> 95% determined by SDS-PAGE (Coomassie)		
Specific Activity:	> 500 nmol/min/mg.; by Kinase Specific Activity: nmol phosphate incorporated into the PKB-sub peptide (CKRPRAASFAE) per minute per mg protein at 30°C for 15 minutes using a final concentration of 50 µM ATP (0.83 µCi/assay).		
Storage & Stability:	Stable as supplied for up to 1 year at -80°C. It is recommended to prepare working aliquots and store at -80°C. Avoid repeat freeze/thaw cycles.		

Sample Purity Data



Sample Kinase Activity Plot



NOT FOR HUMAN USE. FOR RESEARCH ONLY. NOT FOR DIAGNOSTIC OR THERAPEUTIC USE.



Cell Sciences®
65 Parker Street
Unit 11
Newburyport, MA 01950

Toll Free: 888-769-1246
Phone: 978-572-1070
Fax: 978-992-0298

E-mail: info@cellsciences.com
Website: www.cellsciences.com