

## PRKCE

### Recombinant Human PRKCE/PKC epsilon GST Active

<b>Catalog No.</b>	CRP115A	<b>Quantity:</b>	5 µg
	CRP115B		10 µg

**Alternate Names:** PKCE, PKC-epsilon

**GenelD:** 5581

**Protein Accession No:** NM\_005400

**Description:** Recombinant full length Human Protein Kinase C epsilon (PRKCE) with N-terminal GST tag. PRKCE is a member of the protein kinase C (PKC) family of serine- and threonine-specific protein kinases that can phosphorylate a wide variety of protein targets known to be involved in diverse cellular signaling pathways. PRKCE is involved in many different cellular functions, such as neuron channel activation, cardioprotection from ischemia, heat shock response, as well as insulin exocytosis. Knockout studies in mice suggest that this kinase is important for lipopolysaccharide (LPS)-mediated signaling in activated macrophages and may control anxiety-like behavior.

**Concentration:** 0.1 mg/ml

**Source:** Sf9 insect cells

**Molecular Weight:** ~ 110 kDa

**Formulation:** Liquid in 50 mM Tris-HCl, pH 7.5, + 150 mM NaCl + 10 mM glutathione + 0.25 mM DTT + 0.1 mM EDTA + 0.1 mM PMSF + 25% glycerol

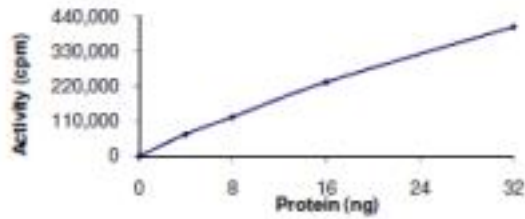
**Purity:** > 90% as determined by Western blot densitometry

**Specific Activity:** > 1000 nmol/min/mg

**Storage & Stability:** Stable for 1 year in working aliquots at -80°C. **Avoid repeated freeze-thaw cycles.**

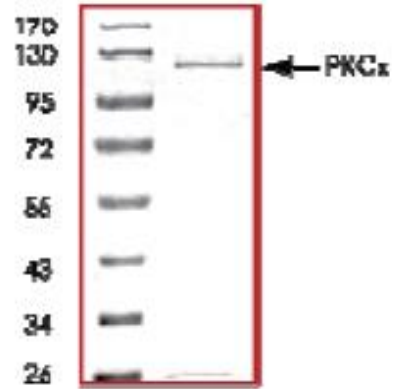
The specific activity of Protein Kinase C epsilon was determined to be 1050 nmol/min/mg as per activity assay protocol.

**Specific Activity**



The purity of Protein Kinase C epsilon was determined to be >90% by densitometry. Approximate MW 110 kDa

**Purity**



NOT FOR HUMAN USE. FOR RESEARCH ONLY. NOT FOR DIAGNOSTIC OR THERAPEUTIC USE.



**Cell Sciences®**  
480 Neponset Street  
Bldg 12A  
Canton, MA 02021

Toll Free: 888-769-1246  
Phone: 781-828-0610  
Fax: 781-828-0542

E-mail: [info@cellsciences.com](mailto:info@cellsciences.com)  
Website: [www.cellsciences.com](http://www.cellsciences.com)