

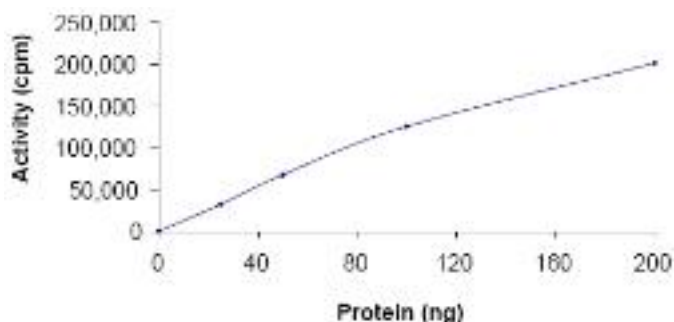
## PRKCH

### Recombinant Human PRKCH/PKC eta GST Active

<b>Catalog No.</b>	CRP116A CRP116B	<b>Quantity:</b>	5 µg 10 µg
<b>Alternate Names:</b>	PKC-L, PKCL, PRKCL, PKC-eta		
<b>GenelD:</b>	5583		
<b>Protein Accession No:</b>	NM_006255		
<b>Description:</b>	Recombinant full length PRKCH with N-terminal GST tag. PRKCH is a member of the protein kinase C (PKC) family of serine- and threonine-specific protein kinases that can phosphorylate a wide variety of protein targets known to be involved in diverse cellular signaling pathways. PRKCH is predominantly expressed in squamous cell epithelia and induces terminal differentiation of keratinocytes. PRKCH that is endogenously expressed or overexpressed is found to associate with the cyclin E/cdk2/p21 complex in keratinocytes of mice and humans.		
<b>Concentration:</b>	0.1 mg/ml		
<b>Source:</b>	Sf9 insect cells		
<b>Molecular Weight:</b>	~ 103 kDa		
<b>Formulation:</b>	Liquid in 50 mM Tris-HCl, pH 7.5 + 150 mM NaCl + 0.25 mM DTT + 0.1 mM EGTA + 0.1 mM EDTA + 0.1 mM PMSF + 25% glycerol		
<b>Purity:</b>	> 90% as determined by densitometry		
<b>Specific Activity:</b>	86 nmol/min/mg		
<b>Storage &amp; Stability:</b>	Stable for 1 year in working aliquots at -80°C. <b>Avoid repeated freeze-thaw cycles.</b>		

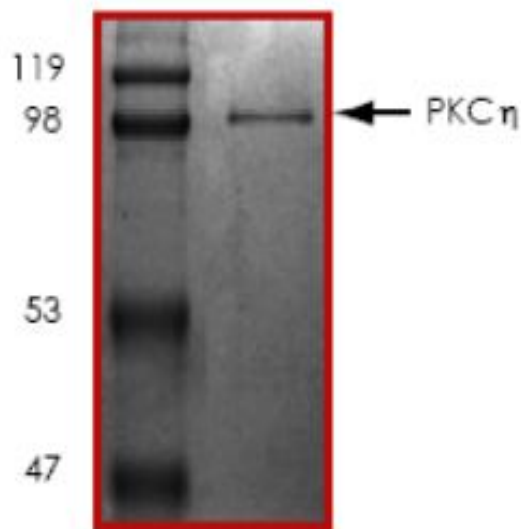
#### Specific Activity:

The specific activity of PKC $\eta$  was determined to be 86 nmol/min/mg



#### Purity:

The purity was determined to be >90% by densitometry. MW ~103kDa.



NOT FOR HUMAN USE. FOR RESEARCH ONLY. NOT FOR DIAGNOSTIC OR THERAPEUTIC USE.



**Cell Sciences®**  
480 Neponset Street  
Bldg 12A  
Canton, MA 02021

Toll Free: 888-769-1246  
Phone: 781-828-0610  
Fax: 781-828-0542

E-mail: [info@cellsciences.com](mailto:info@cellsciences.com)  
Website: [www.cellsciences.com](http://www.cellsciences.com)