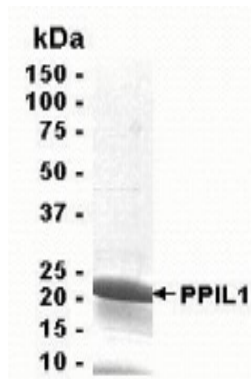


PPIL1

Recombinant Human Peptidyl-prolyl cis-trans Isomerase-like 1

Catalog No.	CRP158	Quantity:	50 µg
Alternate Names:	Peptidyl-prolyl cis-trans Isomerase-like 1 , PPlase, Rotamase PPIL1		
Description:	Peptidyl-prolyl cis-trans Isomerase-like 1 protein is a member of the cyclophilin family of peptidylprolyl isomerases (PPIases). The cyclophilins are a highly conserved, ubiquitous family, members of which play an important role in protein folding, immunosuppression by cyclosporin A, and infection of HIV-1 virions. Based on similarity to other PPIases, this protein could accelerate the folding of proteins and might catalyze the cis-trans isomerization of proline imidic peptide bonds in oligopeptides.		
UniProt ID:	Q9Y3C6		
Gene ID:	51645		
Source:	<i>E. coli</i>		
Molecular Weight:	19.1 kDa (aa 1-166)		
Formulation:	10 mM Tris, 3 mM NaCl, pH 8.0 containing 0.002% NaN ₃		
Purity:	95% by SDS-PAGE		
Applications:	Western blot, ELISA, Mass Spectrometry.		
Storage & Stability:	Store as supplied at -20°C to -80°C for up to 1 year. Upon initial thaw, prepare working aliquots and store at -20°C to -80°C. Avoid repeated freeze-thaw cycles.		

4-20% gradient SDS-PAGE with Coomassie blue staining.



NOT FOR HUMAN USE. FOR RESEARCH ONLY. NOT FOR DIAGNOSTIC OR THERAPEUTIC USE.



Cell Sciences®
65 Parker Street
Unit 11
Newburyport, MA 01950

Toll Free: 888-769-1246
Phone: 978-572-1070
Fax: 978-992-0298

E-mail: info@cellsciences.com
Website: www.cellsciences.com