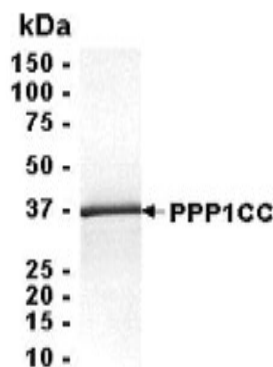


## PPP1CC

# Recombinant Human Protein Phosphatase 1C Catalytic Subunit

<b>Catalog No.</b>	CRP159	<b>Quantity:</b>	50 µg
<b>Alternate Names:</b>	Serine/threonine-protein phosphatase PP1-gamma catalytic subunit, PP-1G, Protein phosphatase 1C catalytic subunit		
<b>Description:</b>	Protein phosphatase 1 (PP1) is essential for cell division, and participates in the regulation of glycogen metabolism, muscle contractility and protein synthesis. It is involved in regulation of ionic conductances and long-term synaptic plasticity. It may play an important role in dephosphorylating substrates such as the postsynaptic density-associated Ca(2+)/calmodulin dependent protein kinase II.		
<b>UniProt ID:</b>	P36873		
<b>Gene ID:</b>	5501		
<b>Source:</b>	<i>E. coli</i>		
<b>Molecular Weight:</b>	37.1 kDa (aa 1-323)		
<b>Formulation:</b>	10 mM Tris, pH 8.0 containing 0.1% Triton X-100, 10 mM DTT and 0.002% Sodium Azide		
<b>Purity:</b>	95% by SDS-PAGE		
<b>Applications:</b>	Western blot, ELISA, Mass Spectrometry.		
<b>Storage &amp; Stability:</b>	Store as supplied at -20°C to -80°C for up to 1 year. Upon initial thaw, prepare working aliquots and store at -20°C to -80°C. <b>Avoid repeated freeze-thaw cycles.</b>		

4-20% gradient SDS-PAGE with Coomassie blue staining



NOT FOR HUMAN USE. FOR RESEARCH ONLY. NOT FOR DIAGNOSTIC OR THERAPEUTIC USE.