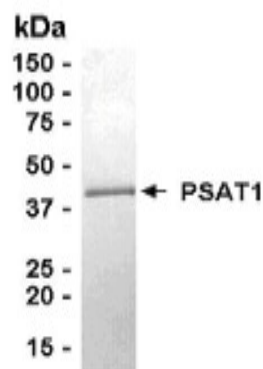


## PSAT1

### Recombinant Human PSAT1

<b>Catalog No.</b>	CRP162	<b>Quantity:</b>	50 µg
<b>Alternate Names:</b>	Phosphoserine aminotransferase, Phosphohydroxythreonine aminotransferase, PSAT		
<b>Description:</b>	PSAT1 is likely a phosphoserine aminotransferase, based on similarity to proteins in mouse, rabbit, and Drosophila. It belongs to class-V of pyridoxal-phosphate-dependent aminotransferases and is required both in major phosphorylated pathway of serine biosynthesis and in the biosynthesis of pyridoxine.		
<b>UniProt ID:</b>	Q9Y617		
<b>Gene ID:</b>	29968		
<b>Source:</b>	<i>E. coli</i>		
<b>Molecular Weight:</b>	42.6 kDa (aa 1-370)		
<b>Formulation:</b>	10 mM Tris, pH 8.0, + 0.1% Triton X-100 + 0.002% NaN <sub>3</sub>		
<b>Purity:</b>	95% by SDS-PAGE		
<b>Applications:</b>	Western blot, ELISA, Mass Spectrometry.		
<b>Storage &amp; Stability:</b>	Store as supplied at -20°C to -80°C for up to 1 year. Upon initial thaw, prepare working aliquots and store at -20°C to -80°C. <b>Avoid repeated freeze-thaw cycles.</b>		

4-20% gradient SDS-PAGE with Coomassie blue staining.



NOT FOR HUMAN USE. FOR RESEARCH ONLY. NOT FOR DIAGNOSTIC OR THERAPEUTIC USE.