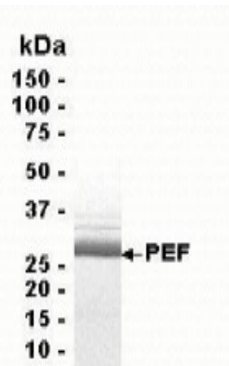


PEF1

Recombinant Human Peflin

Catalog No.	CRP210	Quantity:	50 µg
Alternate Names:	Peflin, PEF protein with a long N-terminal hydrophobic domain1, Penta-EF hand domain-containing protein 1		
Description:	PEF is a calcium-binding protein belonging to the penta-EF-hand protein family. Peflin has a longer N-terminal hydrophobic domain than any other member of the family, and it contains nine nonapeptide (A/PPGGPYGGP) repeats. Western blot analysis demonstrated that peflin (30 kDa) was expressed in various nonadherent and adherent cultured human cell lines, including Jurkat, HL60, HeLa, and HT1080. Peflin may play basic roles in Ca(2+) signaling irrespective of cell types.		
UniProt ID:	Q9UBV8		
Gene ID:	553115		
Source:	<i>E. coli</i>		
Molecular Weight:	32.7 kDa (aa 1-284)		
Formulation:	10 mM Tris, pH 8.0 containing 0.1% Triton X-100 and 0.002% Sodium Azide.		
Purity:	95% by SDS-PAGE		
Applications:	Western blot, ELISA, Mass Spectrometry.		
Storage & Stability:	Store as supplied at -20°C to -80°C for up to 1 year. Upon initial thaw, prepare working aliquots and store at -20°C to -80°C. Avoid repeated freeze-thaw cycles.		

4-20% gradient SDS-PAGE with Coomassie blue



NOT FOR HUMAN USE. FOR RESEARCH ONLY. NOT FOR DIAGNOSTIC OR THERAPEUTIC USE.