

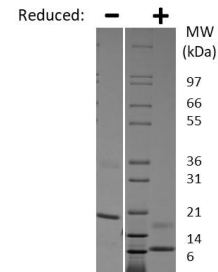
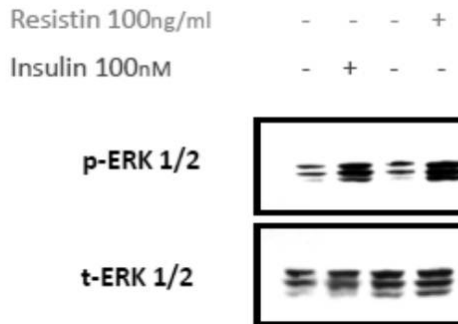
## RETN

### Recombinant Human Resistin

<b>Catalog No.</b>	CRR200A CRR200B CRR200C CRR200D	<b>Quantity:</b>	5 µg 25 µg 1.0 mg 100 µg
<b>Alternate Names:</b>	Adipose tissue-specific secretory factor, ADSF, Cysteine-rich secreted protein FIZZ3, RETN		
<b>Description:</b>	Resistin is a peptide hormone belonging to the class of cysteine-rich secreted proteins which is termed the RELM family and is also described as ADSF (Adipose Tissue-Specific Secretory Factor) and FIZZ3 (Found in Inflammatory Zone). Resistin is produced by adipocytes and may be an important link between obesity and insulin resistance.		
<b>GeneID:</b>	56729		
<b>UniProt ID:</b>	Q9HD89		
<b>Source:</b>	<i>E. coli</i>		
<b>Molecular Weight:</b>	Dimer, 9.9/19.7 kDa (93/186 aa)		
<b>Formulation:</b>	Lyophilized from a sterile filtered aqueous solution containing 0.1% Trifluoroacetic acid (TFA).		
<b>Purity:</b>	≥ 95% determined by reducing and non-reducing SDS-PAGE		
<b>Endotoxin Level:</b>	≤ 1 EU/µg by kinetic LAL analysis.		
<b>Biological Activity:</b>	This product demonstrates P-ERK activation in SH-SY5Y cells, first detectable by western blot at 100 ng/ml. Product also demonstrates IL-8 production by human PBMC, detected by ELISA, ED <sub>50</sub> < 500 ng/ml.		
<b>Amino Acid Sequence:</b>	MSSKTLCSME EAINERIQEV AGSLIFRAIS SIGLECQSVT SRGDLATCPR GFAVTGCTCG SACGSWDVRA ETTCHCQCAG MDWTGARCCR VQP		
<b>Reconstitution:</b>	<b>Centrifuge vial prior to opening.</b> When reconstituting the product, gently pipet and wash down the sides of the vial to ensure full recovery of the protein into solution. It is recommended to reconstitute the lyophilized product with sterile water at a concentration of 0.1 mg/ml, which can be further diluted into other aqueous solutions.		
<b>Storage &amp; Stability:</b>	Store as supplied at -20°C to -80°C for up to 1 year. Upon reconstitution, prepare working aliquots and store at -20°C to -80°C. It is recommended that a carrier protein such as 0.1% HSA or BSA is added for long term storage. <b>Avoid repeated freeze-thaw cycles.</b>		



## Human Resistin Induced ERK Phosphorylation



### Human Resistin Gel

Figure: 1 ug run under (-) non-reducing conditions and (+) reducing conditions in a 4-20% Tris-Glycine gel, stained with Coomassie Blue. Human Resistin is a homodimer with a predicted MW of 19.7 kDa (each monomer is 9.9 kDa).

**NOT FOR HUMAN USE. FOR RESEARCH ONLY. NOT FOR DIAGNOSTIC OR THERAPEUTIC USE.**



**Cell Sciences®**  
65 Parker Street  
Unit 11  
Newburyport, MA 01950

Toll Free: 888-769-1246  
Phone: 978-572-1070  
Fax: 978-992-0298

E-mail: [info@cellsciences.com](mailto:info@cellsciences.com)  
Website: [www.cellsciences.com](http://www.cellsciences.com)