

Gdnf

Recombinant Rat GDNF, Animal Free

Catalog No.	CRR305A-AF CRR305B-AF CRR305C-AF	Quantity:	2 µg 100 µg 1 mg
Alternate Names:	Astrocyte-derived trophic factor, ATF-1		
Description:	Glial cell-derived neurotrophic factor (GDNF) is a neurotrophic factor that signals through a multicomponent receptor system to activate receptor tyrosine kinase RET signaling. GDNF promotes dopamine uptake, prevents motor neuron apoptosis, and supports the survival and differentiation of neurons.		
Gene ID:	25453		
UniProt ID:	Q07731		
Source:	<i>E. coli</i> Manufactured without Animal-derived products, in an Animal Free facility.		
Molecular Weight:	Dimer, 15.1/30.1 kDa (135/270 aa)		
Formulation:	Lyophilized from a sterile-filtered solution containing 10mM sodium phosphate, pH 7.5		
Purity:	≥95% by reducing and non-reducing SDS-PAGE		
Endotoxin Level:	≤1 EU/µg by kinetic LAL analysis		
Biological Activity:	Typical ED50 < 0.1 µg/m, determined by dose-dependent proliferation of C6 cells.		
Amino Acid Sequence:	MSPDKQAAAL PRRERNRQAA AASPENSRGK GRRGQRGKNR GCVLTAIHLN VTDLGLGYET KEELIFRYCS GSCEAAETMY DKILKNLSRS RRLTSDKVGQ ACCRPVAFDD DLSFLDDSLV YHILRKHS AK RCGCI		
Reconstitution:	Centrifuge vial prior to opening. Add sterile distilled water to reconstitute to a recommended concentration of 0.1 mg/mL and gently pipet solution up and down sides of vial. DO NOT VORTEX. Allow several minutes for reconstitution. A small amount of precipitate may be seen.		
Storage & Stability:	Store as supplied at -20°C to -80°C for up to 1 year. Upon reconstitution, prepare working aliquots and store at -20°C to -80°C. It is recommended that a carrier protein such as 0.1% HSA or BSA is added for long term storage. Avoid repeated freeze-thaw cycles.		



Figure 1: C6 cells were cultured with 0 to 5 µg/ml Rat GDNF. Cell proliferation was measured after 7 days and the linear portion of the curve was used to calculate the ED50.

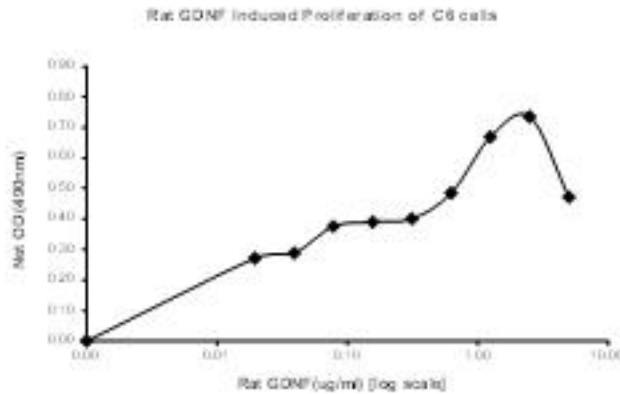
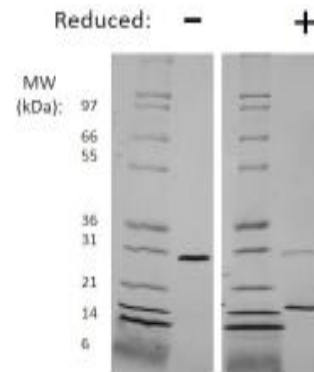


Figure 2:



Rat GDNF QC Gel

Figure: 1 ug of protein was run under (-) reducing conditions in a 4-20% Tris-Glycine gel, stained with Coomassie Blue. Rat GDNF is predicted to be a disulfide linked homodimer having a total MW of 30.1 kDa.

NOT FOR HUMAN USE. FOR RESEARCH ONLY. NOT FOR DIAGNOSTIC OR THERAPEUTIC USE.



Cell Sciences®
65 Parker Street
Unit 11
Newburyport, MA 01950

Toll Free: 888-769-1246
Phone: 978-572-1070
Fax: 978-992-0298

E-mail: info@cellsciences.com
Website: www.cellsciences.com