

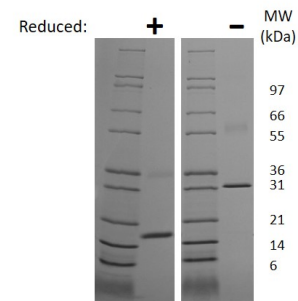
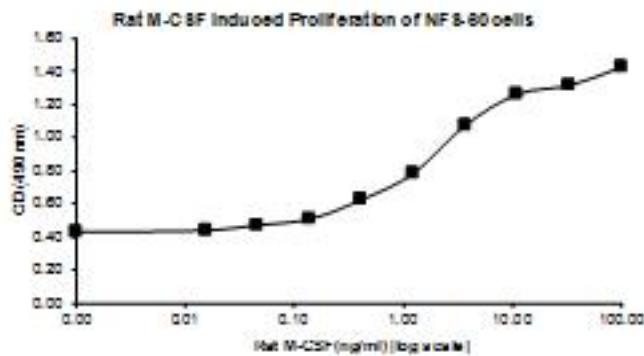
Csf1

Recombinant Rat M-CSF, Animal Free

| | | | |
|---------------------------------|---|------------------|------------------------|
| Catalog No. | CRR307A-AF CRR307B-AF CRR307C-AF | Quantity: | 2 µg 100 µg 1 mg |
| Alternate Names: | Macrophage colony stimulating factor, MCSF, MGI-IM, CSF-1 | | |
| Description: | M-CSF is a hematopoietic growth factor that is widely produced by a variety of cells. M-CSF stimulates the proliferation and differentiation of hematopoietic stem cells into monocyte and macrophage cell types. M-CSF also acts through the colony stimulating factor 1 receptor (CSF1R) to modulate processes involved in immunology, bone metabolism, fertility, and pregnancy. | | |
| Gene ID: | 78965 | | |
| UniProt ID: | Q8JZQ0 | | |
| Source: | <i>E. coli</i> Manufactured without Animal-derived products, in an Animal Free facility. | | |
| Molecular Weight: | Dimer, 18.1/36.2 kDa (155/210 aa) | | |
| Formulation: | Lyophilized from a sterile-filtered solution containing 10 mM sodium phosphate, pH 7.5 | | |
| Purity: | ≥95% by reducing and non-reducing SDS-PAGE | | |
| Endotoxin Level: | ≤1 EU/µg by kinetic LAL analysis | | |
| Biological Activity: | ED ₅₀ ≤ 10 ng/ml, determined by dose-dependent proliferation of NFS-60 cells. | | |
| Specific Activity: | ≥ 1.0 x 10 ⁵ units/mg | | |
| Amino Acid Sequence: | MEVSEHCSHM IGNGHLQILQ QLIDSQMETA CLIEYKFVDQ EQLDDPVCYL KKAFLVLVQVI IEETMRFKDN TPANATERL QELSMKLNLC FIKDYKEQNE ACVQTYKESP LRLLEKIKNF FNETKNFLEK DWNIFSKNCN DSLAKCSSRD VVTKP | | |
| Reconstitution: | Centrifuge vial prior to opening. Add sterile distilled water to reconstitute to a recommended concentration of 0.1 mg/mL and gently pipet solution up and down sides of vial. DO NOT VORTEX. Allow several minutes for reconstitution. | | |
| Storage & Stability: | Store as supplied at -20°C to -80°C for up to 1 year. Upon reconstitution, prepare working aliquots and store at -20°C to -80°C. It is recommended that a carrier protein such as 0.1% HSA or BSA is added for long term storage. Avoid repeated freeze-thaw cycles. | | |



Figure 1: Serial dilutions of Rat M-CSF, starting at 100 ng/ml, were added to NFS-60 cells. Cell proliferation was measured after 68 hours and the linear portion of the curve was used to calculate the ED50.



Rat M-CSF Gel

Figure: 1 ug run under (-) non-reducing conditions and (+) reducing conditions in a 4-20% Tris-Glycine gel, stained with Coomassie Blue. Rat M-CSF is a homodimer with a predicted MW of 36.2 kDa (each monomer is 18.1 kDa).

NOT FOR HUMAN USE. FOR RESEARCH ONLY. NOT FOR DIAGNOSTIC OR THERAPEUTIC USE.



Cell Sciences®
65 Parker Street
Unit 11
Newburyport, MA 01950

Toll Free: 888-769-1246
Phone: 978-572-1070
Fax: 978-992-0298

E-mail: info@cellsciences.com
Website: www.cellsciences.com