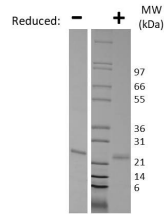


## SHH

### Recombinant Human Sonic Hedgehog

<b>Catalog No.</b>	CRS160A CRS160B CRS160C	<b>Quantity:</b>	5 µg 25 µg 1.0 mg
<b>Alternate Names:</b>	SHH, HHG-1		
<b>Description:</b>	Sonic hedgehog (SHH) is a member of a small group of hedgehog secreted proteins that are essential for development in both vertebrates and invertebrates. There are three mammalian hedgehog homologues, sonic, desert, and indian, that signal via the Patched-1 and Patched-2 receptors. SHH is a morphogen that is essential during vertebrate organogenesis and adult stem cell division.		
<b>Gene ID:</b>	6469		
<b>UniProt ID:</b>	Q15465		
<b>Source:</b>	<i>E. coli</i>		
<b>Molecular Weight:</b>	20.2 kDa, 179 aa		
<b>Formulation:</b>	Lyophilized from a sterile-filtered solution in 10 mM sodium phosphate, pH 7.5.		
<b>Purity:</b>	≥ 95% by reducing and non-reducing SDS-PAGE		
<b>Endotoxin Level:</b>	≤ 0.1 EU/µg of protein by kinetic LAL analysis		
<b>Biological Activity:</b>	ED <sub>50</sub> ≤ 5 ug/ml, as determined by does-dependent proliferation of CCL-226 cells.		
<b>Specific Activity:</b>	≥ 200 units/mg		
<b>Amino Acid Sequence:</b>	MIIGPGRGFG KRRHPKLTTP LAYKQFIPNV AEKTLGASGR YEGKISRNSE RFKELTPNYN PDIIFKDEEN TGADRLMTQR CKDKLNALAI SVMNQWPGVK LRVTEGWDED GHHSEESLHY EGRALDITTS DRDRSKYGML ARLAVEAGFD WVYYESKAHI HCSVKAENSV AAKSGGCFP		
<b>Reconstitution:</b>	<b>Centrifuge vial prior to opening.</b> Add sterile water to a concentration of 0.1 mg/ml, gently pipetting the solution down the sides of the vial. <b>DO NOT VORTEX.</b> Allow several minutes for complete reconstitution.		
<b>Storage &amp; Stability:</b>	Store as supplied at -20°C to -80°C for up to 1 year. Upon reconstitution, prepare working aliquots and store at -20°C to -80°C. It is recommended that a carrier protein such as 0.1% HSA or BSA is added for long term storage. <b>Avoid repeated freeze-thaw cycles.</b>		



#### Human SHH Gel

Figure: 1 ug run under (-) non-reducing conditions and (+) reducing conditions in a 4-20% Tris-Glycine gel, stained with Coomassie Blue. Human SHH is predicted to have a MW of 20.2 kDa.

**NOT FOR HUMAN USE. FOR RESEARCH ONLY. NOT FOR DIAGNOSTIC OR THERAPEUTIC USE.**



**Cell Sciences®**  
65 Parker Street  
Unit 11  
Newburyport, MA 01950

Toll Free: 888-769-1246  
Phone: 978-572-1070  
Fax: 978-992-0298

E-mail: [info@cellsciences.com](mailto:info@cellsciences.com)  
Website: [www.cellsciences.com](http://www.cellsciences.com)