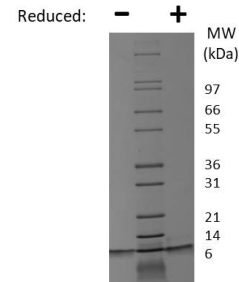
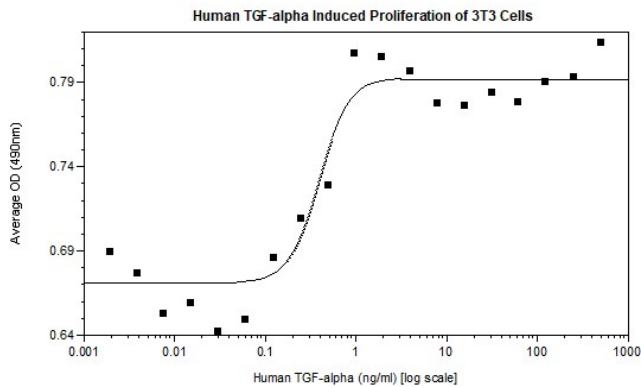


## TGFA

### Recombinant Human TGF-alpha 1

<b>Catalog No.</b>	CRT008A CRT008B CRT008C	<b>Quantity:</b>	25 µg 100 µg 1.0 mg
<b>Alternate Names:</b>	Transforming Growth Factor-alpha 1, TGF-alpha, TGF type 1, EGF-like TGF, ETGF		
<b>Description:</b>	<p>Tumor growth factor alpha (TGF-α) is a member of the epidermal growth factor (EGF) family. TGF-α function is mediated through binding the EGF receptor (EGFR) to activate receptor tyrosine kinase signaling. TGF-α functions as a mitogen to activate epithelial cell proliferation, growth, and differentiation. In the gastric mucosa, TGF-α production inhibits gastric acid secretion and therefore plays a central role in the pathogenesis of the stomach syndrome Ménétrier's disease.</p> <p>TGF-α is also produced in adult macrophages, brain cells, keratinocytes, and is widely expressed in cancer cells.</p>		
<b>GeneID:</b>	7039		
<b>UniProt ID:</b>	P01135		
<b>Source:</b>	<i>E.coli</i>		
<b>Formulation:</b>	Lyophilized from a sterile (0.2 micron) filtered aqueous solution containing 0.1% Trifluoroacetic Acid (TFA)		
<b>Purity:</b>	≥ 95% by reducing and non-reducing SDS-PAGE.		
<b>Endotoxin Level:</b>	≤ 1 EU/µg by Kinetic LAL analysis		
<b>Biological Activity:</b>	ED <sub>50</sub> ≤ 2 ng/ml, determined by dose-dependent 3T3 cell proliferation.		
<b>Specific Activity:</b>	≥ 5 x 10 <sup>5</sup> units/mg		
<b>Amino Acid Sequence:</b>	VVSHFNDCPD SHTQFCFHGT CRFLVQEDKP ACVCHSGYVG ARCEHADLLA		
<b>Reconstitution:</b>	<p><b>Centrifuge vial prior to opening.</b> Reconstitute in water to a concentration of 0.1 mg/ml. Suspend the product by gently pipetting the above recommended solution down the sides of the vial. DO NOT VORTEX. Allow several minutes for complete reconstitution. For prolonged storage, dilute to working aliquots in a 0.1% BSA solution, store at -80°C and avoid repeat freeze thaws.</p>		
<b>Storage &amp; Stability:</b>	<p>Lyophilized product is stable at room temperature for shipping purposes. After receipt, store at ≤20°C. After reconstitution, the preparation is stable for up to one week at 2-8°C. For maximal stability, apportion the reconstituted preparation into working aliquots and store at -20°C to -80°C. For long term storage of reconstituted protein, it is recommended that a carrier protein such as 0.1% BSA or HSA be added. This depends on the particular application employed.</p> <p><b>Avoid repeated freeze/thaw cycles.</b></p>		





## Human TGF- $\alpha$ Gel

Figure: 1  $\mu$ g run under (-) non-reducing conditions and (+) reducing conditions in a 4-20% Tris-Glycine gel, stained with Coomassie Blue. Human TGF- $\alpha$  is predicted to have a MW of 5.6 kDa.

**NOT FOR HUMAN USE. FOR RESEARCH ONLY. NOT FOR DIAGNOSTIC OR THERAPEUTIC USE.**



**Cell Sciences®**  
65 Parker Street  
Unit 11  
Newburyport, MA 01950

Toll Free: 888-769-1246  
Phone: 978-572-1070  
Fax: 978-992-0298

E-mail: [info@cellsciences.com](mailto:info@cellsciences.com)  
Website: [www.cellsciences.com](http://www.cellsciences.com)