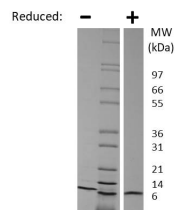


CCL17

Recombinant Human CCL17/ TARC

Catalog No.	CRT200A CRT200B CRT200C	Quantity:	5 µg 20 µg 1.0 mg
Alternate Names:	C-C motif chemokine 17, CC chemokine TARC, Thymus and Activation Regulated Chemokine, T cell-directed CC chemokine, Small-inducible cytokine A17, SCYA17		
Description:	CCL17/TARC is one of several CC cytokines, proteins characterized by two adjacent cysteines. CCL17 displays chemotactic activity for T lymphocytes, but not monocytes or granulocytes. It binds to chemokine receptors CCR4 and CCR8. CCL17 plays important roles in T cell development in thymus as well as in trafficking and activation of mature T cells. CCL17 is constitutively expressed in thymus, and at a lower level in lung, colon, and small intestine. CCL17 is also transiently expressed in stimulated peripheral blood mononuclear cells.		
Gene ID:	6361		
Protein Accession No.:	Q92583		
Source:	<i>E. coli</i>		
Molecular Weight:	8.1 kDa (71 aa)		
Formulation:	Lyophilized from a sterile-filtered solution containing 0.1% Trifluoroacetic Acid (TFA).		
Purity:	> 95% by reducing and non-reducing SDS-PAGE		
Endotoxin Level:	≤ 1 EU/µg of protein by kinetic LAL analysis		
Amino Acid Sequence:	ARGTNVGREC CLEYFKGAIP LRKLKTWYQT SEDCSRDAIV FVTVQGRAIC SDPNNKRVKN AVKYLQSLER S		
Reconstitution:	Centrifuge vial prior to opening. Add sterile distilled water to a concentration of 0.1 mg/ml. DO NOT VORTEX. Allow several minutes for complete reconstitution. Further dilutions should be made in appropriate buffered solutions.		
Storage & Stability:	Lyophilized product is stable at room temperature for shipping purposes. Upon receipt, store at -20°C to -80°C for up to 1 year. Upon reconstitution, the preparation is stable for up to one month at 2-8°C. For long term storage, prepare working aliquots and store at -20 to -80°C. For maximal stability, dilute to working aliquots in a 0.1% BSA solution. Avoid repeated freeze-thaw cycles.		





Human TARC / CCL17 Gel

Figure: 1 ug run under (-) non-reducing conditions and (+) reducing conditions in a 4-20% Tris-Glycine gel, stained with Coomassie Blue. Human TARC / CCL17 is predicted to have a MW of 8.1 kDa.

NOT FOR HUMAN USE. FOR RESEARCH ONLY. NOT FOR DIAGNOSTIC OR THERAPEUTIC USE.



Cell Sciences®
65 Parker Street
Unit 11
Newburyport, MA 01950

Toll Free: 888-769-1246
Phone: 978-572-1070
Fax: 978-992-0298

E-mail: info@cellsciences.com
Website: www.cellsciences.com