

KDM5D

Recombinant Human Lysine-Specific Demethylase 5D, His Tag

Catalog No.	CS414	Quantity:	25 µg
Alternate Names:	Histocompatibility Y antigen, H-Y antigen, Histone demethylase JARID1D, Protein SmcY		
Description:	<p>H-Y antigen is defined as a male histocompatibility antigen that causes rejection of male skin grafts by female recipients of the same inbred strain of rodents. Male-specific, or H-Y antigen(s), are also detected by cytotoxic T cells and antibodies. H-Y antigen appears to be an integral part of the membrane of most male cells. In addition, H-Y antibodies detect a soluble form of H-Y that is secreted by the testis. The gene (Smcy/SMCY) coding for H-Y antigen detected by T cells has been cloned. It is expressed ubiquitously in male mice and humans, and encodes an epitope that triggers a specific T-cell response in vitro. Additional epitopes coded for by different Y-chromosomal genes are probably required in vivo for the rejection of male grafts by female hosts. The molecular nature of H-Y antigen detected by antibodies on most male cells is not yet known. Testis-secreted, soluble H-Y antigen, however, was found to be identical to Müllerian-inhibiting substance (MIS). MIS cross-reacts with H-Y antibodies and identical findings were obtained for soluble H-Y antigen and MIS, i.e., secretion by testicular Sertoli and, to a lesser degree, ovarian cells, binding to a gonad-specific receptor, induction of gonadal sex reversal in vitro and, in cattle, in vivo. H-Y antisera also detect a molecule or molecules associated with the heterogametic sex in non-mammalian vertebrates.</p>		
UniProt ID:	Q9BY66		
Gene ID:	8284		
Source:	<i>E. coli</i>		
Molecular Weight:	33.87 kDa (301 aa)		
Formulation:	Lyophilized from 50 mM NaP, 300 mM NaCl, pH 8.0.		
Purity:	> 95% by SDS-PAGE, visualized by silver stain		
Amino Acid Sequence:	<p>ALLVALQRLP VRLPEGEALQ CLTERAIGWQ DRARKALASE DVTALLRQLA ELRQQQLQAKP RPEEASVYTS ATACDPIREG SGNNISKVQG LENGDSVTS PENMAPGKGS DLELLSSLLP QLTGPVLELP EAIRAPLEEL MMEGDLLEVT LDENHSIWQL LQAGQPPDL RIRTLLELEK FEHQGSRTS RALERRRRRQ KVDQGRNVEN LVQQELQSKR ARSSGIMSQV GREEEHYQEK ADRENMFLTP STDHSPFLKG NQNSLQHKDS GSSAACPSLM PLLQLSYSDE QQLLEHHHHH H</p>		

Reconstitution:



Cell Sciences®
65 Parker Street
Unit 11
Newburyport, MA 01950

Toll Free: 888-769-1246
Phone: 978-572-1070
Fax: 978-992-0298

E-mail: info@cellsciences.com
Website: www.cellsciences.com

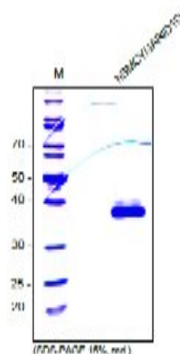
1.0 mg/mL. **Do not vortex.** After complete solubilization of the protein, it may be further diluted with other solutions containing a carrier protein such as 0.1 % BSA.

Storage & Stability:

The lyophilized protein is stable at -20°C to -80° for up to 1 year. Reconstituted working aliquots are stable for 1 week at 2-8°C and for 3 months at -20°C to -80°C.

Avoid repeated freeze/thaw cycles.

SDS-PAGE analysis of recombinant human SMCY. Sample was loaded in 15% SDS-polyacrylamide gel under reducing conditions and stained with Coomassie blue.



NOT FOR HUMAN USE. FOR RESEARCH ONLY. NOT FOR DIAGNOSTIC OR THERAPEUTIC USE.



Cell Sciences®
65 Parker Street
Unit 11
Newburyport, MA 01950

Toll Free: 888-769-1246
Phone: 978-572-1070
Fax: 978-992-0298

E-mail: info@cellsciences.com
Website: www.cellsciences.com