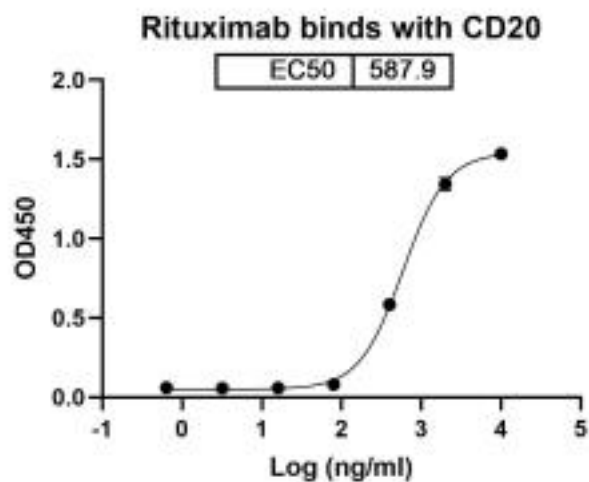
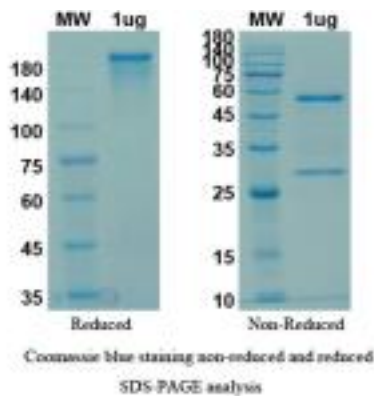


MS4A1

Human-Mouse Chimeric Anti-CD20 (Rituximab) mAb

Catalog No.	CSB100A CSB100B	Quantity:	100 µg 1 mg
Alternate Names:	IDEC-C2B8, Rituxan		
Description:	Rituximab is a genetically engineered chimeric murine/human monoclonal antibody directed against the CD20 antigen found on the surface of normal and malignant B lymphocytes. After binding to CD20, rituximab mediates B-cell lysis (or breakdown). The possible mechanisms of cell lysis include complement dependent cytotoxicity (CDC) and antibody dependent cell-mediated cytotoxicity (ADCC). The antibody is an IgG1 kappa immunoglobulin containing murine light and heavy-chain variable region sequences and human constant region sequences. It was originally approved by the U.S. FDA in 1997 as a single agent to treat patients with B-cell Non-Hodgkin's Lymphoma (NHL) and has now been approved for a variety of conditions.		
Concentration:	1.0 mg/ml		
UniProt ID (target):	P11836		
Source:	CHO cell line		
Isotype:	Chimeric IgG1 kappa		
Specificity:	Human CD20		
Formulation:	PBS, pH 7.5		
Purity:	> 95% as determined by SDS-PAGE		
Biological Activity:	Rituximab is highly efficient at mediating CMC(complement dependent cytotoxicity) of various B cell lines as well as fresh malignant B cell samples. CD20-binding capacity of rituximab is dose-dependent. EC ₅₀ = 0.588 µg/ml, Rituximab binding CD20 by ELISA		
Applications:	Functional studies, ELISA		
Storage & Stability:	Store at 2-8°C for up to 1 week, or undiluted in working aliquots at -20°C to -80°C for up to 1 year. Avoid freeze/thaw cycles.		



NOT FOR HUMAN USE. FOR RESEARCH ONLY. NOT FOR DIAGNOSTIC OR THERAPEUTIC USE.