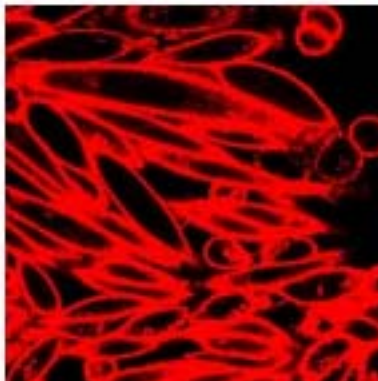


EDNRA

Endothelin-1 receptor

Catalog No.	CSH1051MP CSH1051PR	Quantity:	10 mg 50 µg
Alternate Names:	Endothelin receptor type A, ET-A, ETA-R, G Protein-Coupled Receptor, MFDA		
Description:	<p>EDNRA encodes the protein Endothelin-1 receptor (ETA), a peptide that plays a role in potent and long-lasting vasoconstriction. The ETA receptor is a member of the endothelin receptor group of G-protein-coupled receptors that also includes ETB. They are located primarily in the vascular smooth muscle where they play a role in vasoconstriction and cell proliferation.</p> <p>The receptor is available in the following formats: stable over-expression cell line, membrane preparation, or purified receptor in HEK293 or CHO. Various tagged versions are available.</p>		
Gene ID:	1909		
UniProtKB:	P25101		
Format:	Cell line, membrane preparation, or purified protein		
Source:	HEK 293 or CHO cells		
Characterization:	Expression verified by flow cytometry. Receptor demonstrates biological activity when tested in a radioligand assay.		
Affinity Tag Options:	4S: 2 x TwinStrep Tag at the amino-terminus FR: Flag Tag, Rho Tag		

Human EDNRA receptor was stably overexpressed in CHO cells and expression was assessed by immunostaining with Strep-Tactin Chromeo 546



NOT FOR HUMAN USE. FOR RESEARCH ONLY. NOT FOR DIAGNOSTIC OR THERAPEUTIC USE.



Cell Sciences®
65 Parker Street
Unit 11
Newburyport, MA 01950

Toll Free: 888-769-1246
Phone: 978-572-1070
Fax: 978-992-0298

E-mail: info@cellsciences.com
Website: www.cellsciences.com