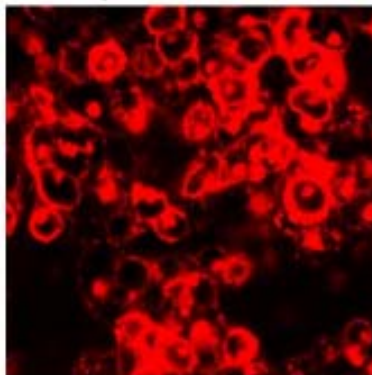


GPR85

Probable G-protein coupled receptor 85

Catalog No.	CSH2038MP CSH2038PR	Quantity:	10 mg 50 µg
Alternate Names:	G Protein-Coupled Receptor 85, Super Conserved Receptor Expressed In Brain 2, SREB2, Seven Transmembrane Helix Receptor		
Description:	<p>GPR85 encodes the Probable G-protein coupled receptor 85, a superconserved orphan receptor expressed in brain. An important paralog of this gene is GPR173.</p> <p>The receptor is available in the following formats: stable over-expression cell line, membrane preparation, or purified receptor in HEK293 or CHO. Various tagged versions are available.</p>		
Gene ID:	54329		
UniProtKB:	P60893		
Format:	Cell line, membrane preparation, or purified protein		
Source:	HEK 293 or CHO cells		
Characterization:	Expression verified by flow cytometry. Receptor demonstrates biological activity when tested in a radioligand assay.		
Affinity Tag Options:	4S: 2 x TwinStrep Tag at the amino-terminus		

Human GPR85 receptor was stably overexpressed in HEK cells and expression was assessed by immunostaining with Strep-Tactin Chromeo 546



NOT FOR HUMAN USE. FOR RESEARCH ONLY. NOT FOR DIAGNOSTIC OR THERAPEUTIC USE.



Cell Sciences®
65 Parker Street
Unit 11
Newburyport, MA 01950

Toll Free: 888-769-1246
Phone: 978-572-1070
Fax: 978-992-0298

E-mail: info@cellsciences.com
Website: www.cellsciences.com