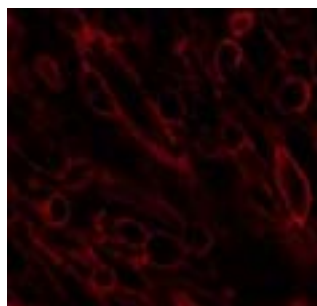


GPR15

G-protein coupled receptor 15

Catalog No.	CSH3002MP CSH3002PR	Quantity:	10 mg 50 µg
Alternate Names:	Brother of Bonzo, BoB		
Description:	GPR15 encodes the G-protein coupled receptor 15, which acts as a chemokine receptor for human immunodeficiency virus type 1 and 2. The encoded protein localizes to the cell membrane. An important paralog of this gene is GPR25. The receptor is available in the following formats: stable over-expression cell line, membrane preparation, or purified receptor in HEK293 or CHO. Various tagged versions are available.		
Gene ID:	2838		
UniProtKB:	P49685		
Format:	Cell line, membrane preparation, or purified protein		
Source:	HEK 293 or CHO cells		
Characterization:	Expression verified by flow cytometry. Receptor demonstrates biological activity when tested in a radioligand assay.		
Affinity Tag Options:	4S-H: 2 x TwinStrep Tag at the amino-terminus, His ₁₀ Tag at the carboxy-terminus		

Human GPR15 receptor was stably overexpressed in CHO cells and expression was assessed by immunostaining with Strep-Tactin Chromeo 546



NOT FOR HUMAN USE. FOR RESEARCH ONLY. NOT FOR DIAGNOSTIC OR THERAPEUTIC USE.



Cell Sciences®
65 Parker Street
Unit 11
Newburyport, MA 01950

Toll Free: 888-769-1246
Phone: 978-572-1070
Fax: 978-992-0298

E-mail: info@cellsciences.com
Website: www.cellsciences.com