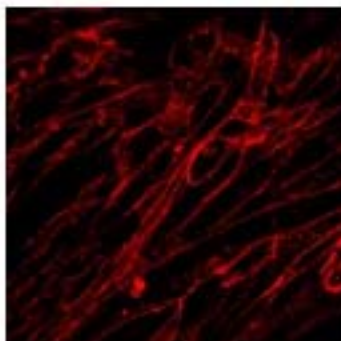


GLP1R

Glucagon-like peptide 1 receptor

Catalog No.	CSH3008MP CSH3008PR	Quantity:	10 mg 50 µg
Alternate Names:	GLP-1R, Seven Transmembrane Helix Receptor,		
Description:	<p>GLP1R encodes a 7-transmembrane protein known as Glucagon-like peptide 1 receptor. It is found on pancreatic beta cells and plays an important role in the signaling cascades leading to glucose-induced insulin secretion and control of blood sugar.</p> <p>The receptor is available in the following formats: stable over-expression cell line, membrane preparation, or purified receptor in HEK293 or CHO. Various tagged versions are available.</p>		
Gene ID:	2740		
UniProtKB:	P43220		
Format:	Cell line, membrane preparation, or purified protein		
Source:	HEK 293 or CHO cells		
Characterization:	Expression verified by flow cytometry. Receptor demonstrates biological activity when tested in a radioligand assay.		
Affinity Tag Options:	4S: 2 x TwinStrep Tag at the amino-terminus FR: Flag Tag, Rho Tag		

Human GLP1R receptor was stably overexpressed in CHO cells and expression was assessed by immunostaining with Strep-Tactin Chromeo 546



NOT FOR HUMAN USE. FOR RESEARCH ONLY. NOT FOR DIAGNOSTIC OR THERAPEUTIC USE.



Cell Sciences®
65 Parker Street
Unit 11
Newburyport, MA 01950

Toll Free: 888-769-1246
Phone: 978-572-1070
Fax: 978-992-0298

E-mail: info@cellsciences.com
Website: www.cellsciences.com