

## MTNR1A

### Melatonin receptor type 1A (MT1A)

<b>Catalog No.</b>	CSH4157MP	<b>Quantity:</b>	10 mg
	CSH4157PR		50 µg

**Alternate Names:** Mel1a Receptor, MEL-1A-R, MT1

**Description:** MTNR1A encodes the protein known as Melatonin receptor type 1A (MT1). This receptor is one of two high-affinity forms of a receptor for melatonin, the primary hormone secreted by the pineal gland. This receptor is a G protein-coupled, 7-transmembrane receptor that likely mediates the reproductive and circadian actions of melatonin.

The receptor is available in the following formats: stable over-expression cell line, membrane preparation, or purified receptor in HEK293 or CHO. Various tagged versions are available.

**Gene ID:** 4543

**UniProtKB:** P48039

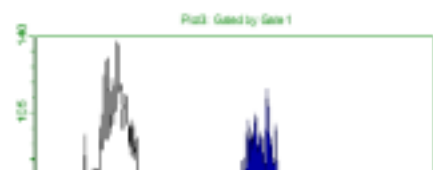
**Format:** Cell line, membrane preparation, or purified protein

**Source:** HEK 293 or CHO cells

**Characterization:** Expression verified by flow cytometry. Receptor demonstrates biological activity when tested in a radioligand assay.

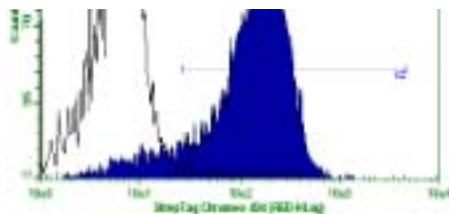
**Affinity Tag Options:** 4S: 2 x TwinStrep Tag at the amino-terminus  
 YFP-R-4S: 2 x TwinStrep Tag at the amino-terminus, YFP-Rho Tag at the carboxy-terminus  
 SR: 2 x TwinStrep Tag at the amino-terminus and RhoTag at the carboxy-terminus

Human MTNR1A receptor was stably overexpressed in CHO cells and expression was assessed by flow cytometry with Strep-Tactin Chromeo 488



Human MTNR1A receptor was stably overexpressed in CHO cells and expression was assessed by immunostaining with Strep-Tactin Chromeo 546





NOT FOR HUMAN USE. FOR RESEARCH ONLY. NOT FOR DIAGNOSTIC OR THERAPEUTIC USE.



**Cell Sciences®**  
65 Parker Street  
Unit 11  
Newburyport, MA 01950

Toll Free: 888-769-1246  
Phone: 978-572-1070  
Fax: 978-992-0298

E-mail: [info@cellsciences.com](mailto:info@cellsciences.com)  
Website: [www.cellsciences.com](http://www.cellsciences.com)