

## MTNR1B

### Melatonin receptor type 1B (MT1B)

<b>Catalog No.</b>	CSH4158MP	<b>Quantity:</b>	10 mg
	CSH4158PR		50 µg

**Alternate Names:** Mel1b Receptor, MEL-1B-R, MT2, FGQTL2

**Description:** MTNR1B encodes the protein known as Melatonin receptor type 1B (MT2). This receptor is one of two (MT1 and MT2) high-affinity Gi/G0 protein-coupled receptors for melatonin, the primary hormone secreted by the pineal gland. This receptor is thought to participate in light-dependent functions in the retina and may be involved in the neurobiological effects of melatonin.

The receptor is available in the following formats: stable over-expression cell line, membrane preparation, or purified receptor in HEK293 or CHO. Various tagged versions are available.

**Gene ID:** 4544

**UniProtKB:** P49286

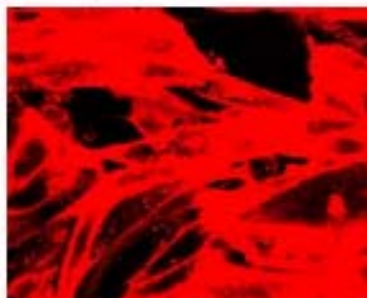
**Format:** Cell line, membrane preparation, or purified protein

**Source:** HEK 293 or CHO cells

**Characterization:** Expression verified by flow cytometry. Receptor demonstrates biological activity when tested in a radioligand assay.

**Affinity Tag Options:** 4S: 2 x TwinStrep Tag at the amino-terminus

Human MTNR1B receptor was stably overexpressed in CHO cells and expression was assessed by immunostaining with Strep-Tactin Chromeo 546



# cellsciences.com



NOT FOR HUMAN USE. FOR RESEARCH ONLY. NOT FOR DIAGNOSTIC OR THERAPEUTIC USE.



**Cell Sciences®**  
65 Parker Street  
Unit 11  
Newburyport, MA 01950

Toll Free: 888-769-1246  
Phone: 978-572-1070  
Fax: 978-992-0298

E-mail: [info@cellsciences.com](mailto:info@cellsciences.com)  
Website: [www.cellsciences.com](http://www.cellsciences.com)