

CSNK2A1

Recombinant Human CK2 alpha 1 polypeptide Active GST

Catalog No.	CSI11176	Quantity:	50 µg
Alternate Names:	CK2A1, CKII, CK2 catalytic subunit alpha, casein kinase II alpha 1 subunit, casein kinase II alpha subunit, protein kinase CK2		
Description:	Human CK2-alpha1, Amino acids M ₁ -Q ₃₉₁ (as in GenBank entry NM_001895)*, N-terminally fused to GST. *Sequence may contain documented polymorphisms Detailed sequence on request		
Concentration:	0.480 µg/µl		
Gene ID:	1457		
Protein Accession No:	NM_001895		
Source:	Baculovirus infected Sf9 cells		
Molecular Weight:	Theoretical MW _{Fusion Protein} : 70,924 Da		
Formulation:	50 mM Tris-HCl, pH 8.0 + 100 mM NaCl + 5 mM DTT + 15 mM reduced glutathione, 20% glycerol		
Purification:	One-step affinity purification using GSH-agarose		
Product Identity:	CK2-alpha1 was confirmed as CK2-alpha1 by specific Western Blotting using anti CK2-alpha1 antibody.		
Specific Activity:	5 pmol/µg×min		

Method for determination of K_m value and specific activity:

- Assay conditions:
60 mM HEPES-NaOH, pH 7.5
3 mM MgCl₂
3 mM MnCl₂
3 µM Na-orthovanadate
1.2 mM DTT
2.5 µg / 50 µl PEG_{20,000}
ATP (variable)
Substrate: Casein, 10 µg / 50 µl
Recombinant CK2-alpha1: 200 ng / 50 µl
- Filter binding assay
MSFC membrane (Millipore)

Storage & Stability: Store in working aliquots at -80°C. **Avoid repeated freeze-thaw cycles.**

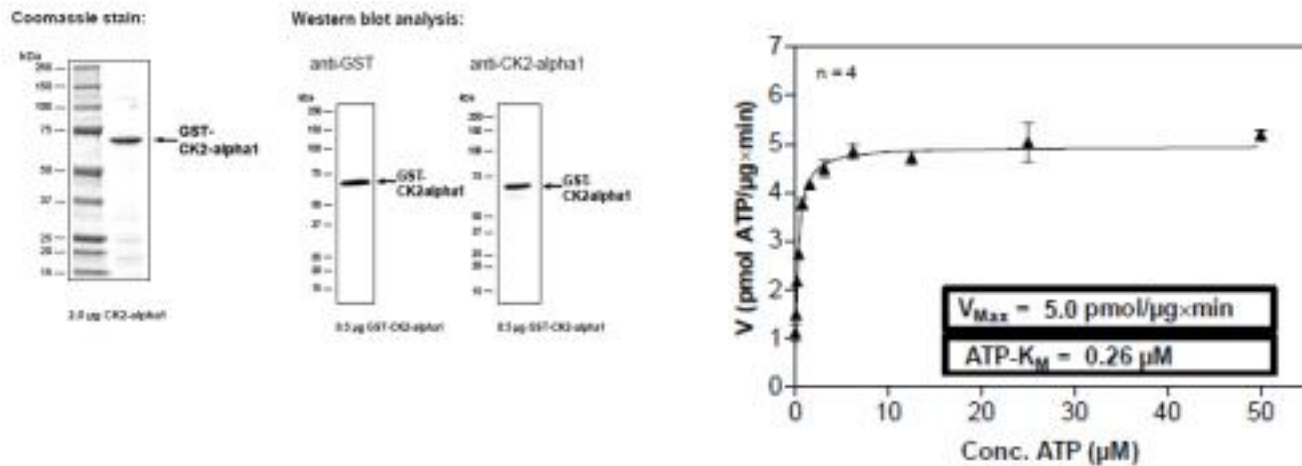


Cell Sciences®
480 Neponset Street
Bldg 12A
Canton, MA 02021

Toll Free: 888-769-1246
Phone: 781-828-0610
Fax: 781-828-0542

E-mail: info@cellsciences.com
Website: www.cellsciences.com

Determination of K_m value for ATP:



NOT FOR HUMAN USE. FOR RESEARCH ONLY. NOT FOR DIAGNOSTIC OR THERAPEUTIC USE.



Cell Sciences®
 480 Neponset Street
 Bldg 12A
 Canton, MA 02021

Toll Free: 888-769-1246
 Phone: 781-828-0610
 Fax: 781-828-0542

E-mail: info@cellsciences.com
 Website: www.cellsciences.com