

LYN

Recombinant Human LYN Protein Tyrosine Kinase Active GST-His

Catalog No.	CSI11184	Quantity:	50 µg
Alternate Names:	FLJ26625, JTK8, Yamaguchi sarcoma viral (v-yes-1) oncogene homolog, Yamaguchi sarcoma viral (v-yes-1) related oncogene homolog		
Description:	Human LYN, Amino acids M1-P512 (as in GenBank entry NM_002350)*, N-terminally fused to GST-HIS ₆ -Thrombin cleavage site. *Sequence may contain documented polymorphisms Detailed sequence on request		
Concentration:	0.222 µg/µl		
Gene ID:	4067		
Protein Accession No:	NM_002350		
Source:	Baculovirus infected Sf9 cells		
Molecular Weight:	Theoretical MW _{Fusion Protein} : 88,470 Da		
Formulation:	50 mM Tris-HCl + pH 8.0 + 100 mM NaCl + 5 mM DTT + 4 mM reduced glutathione, 20% glycerol		
Purification:	One-step affinity purification using GSH-agarose		
Product Identity:	LYN was confirmed as human LYN by mass spectroscopy LC-ESI-MS/MS		
Specific Activity:	94 pmol/µg×min		

Method for determination of K_m value and specific activity:

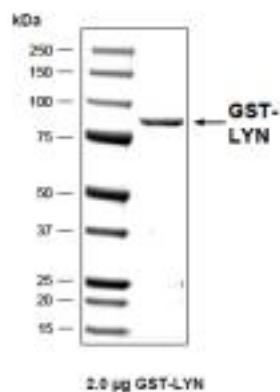
- Assay conditions:
60 mM HEPES-NaOH, pH 7.5
3 mM MgCl₂
3 mM MnCl₂
3 µM Na-orthovanadate
1.2 mM DTT
2.5 µg / 50 µl PEG_{20,000}
ATP (variable)
Substrate: Poly(Glu,Tyr)_{4:1}
(Sigma P-0275), 2.0 µg / 50 µl
Recombinant LYN: 50 ng / 50 µl
- Filter binding assay
MAFC membrane (Millipore)



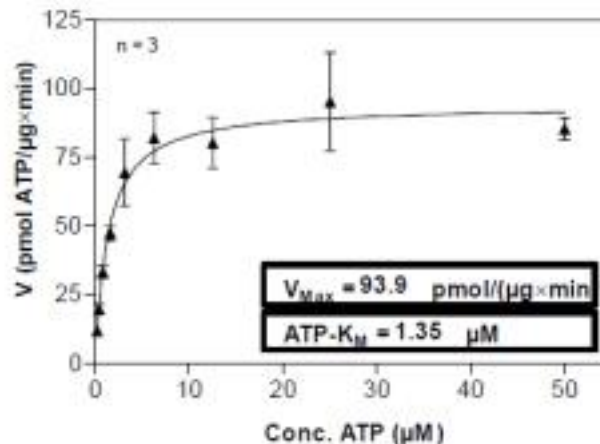
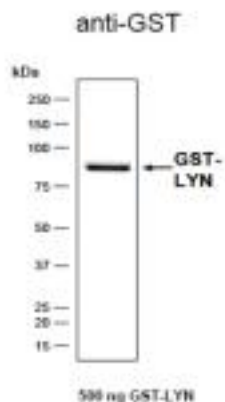
Storage & Stability: Store in working aliquots at -80°C. **Avoid repeated freeze-thaw cycles.**

Determination of K_m value for ATP:

Coomassie stain:



Western blot analysis:



NOT FOR HUMAN USE. FOR RESEARCH ONLY. NOT FOR DIAGNOSTIC OR THERAPEUTIC USE.



Cell Sciences®
480 Neponset Street
Bldg 12A
Canton, MA 02021

Toll Free: 888-769-1246
Phone: 781-828-0610
Fax: 781-828-0542

E-mail: info@cellsciences.com
Website: www.cellsciences.com