

MAPK11

Recombinant Human MAPK11/MAPK11/p38 beta Active

Catalog No.	CSI11186	Quantity:	50 µg
Alternate Names:	P38B, P38BETA2, PRKM11, SAPK2, SAPK2B, p38-2, p38Beta, mitogen-activated protein kinase p38 beta, mitogen-activated protein kinase p38-2, stress-activated protein kinase-2, stress-activated protein kinase-2b		
Description:	Human p38-beta, full length, amino acids M ₁ -Q ₃₆₄ (as in GenBank entry NM_002751.5)*, activated, untagged, expressed in <i>E. coli</i> . *Sequence may contain documented polymorphisms Detailed aa-sequence on request		
Concentration:	0.810 µg/µl		
Gene ID:	5600		
Protein Accession No:	NM_002751.5		
Source:	<i>E. coli</i>		
Molecular Weight:	Theoretical MW _{Fusion Protein} : 41,485 Da		
Formulation:	50 mM HEPES, pH 7.5 + 100 mM NaCl + 3 mM βME + 20% glycerol		
Purification:	Immobilized Metal Affinity Chromatography		
Product Identity:	p38-beta was confirmed as p38-beta by mass spectroscopy LCESI-MS/MS		
Activation:	With MKK6 SDTD (GenBank accession No.: NM_002758.2		
Specific Activity:	701 pmol/µg×min		

Method for determination of Km value and specific activity:

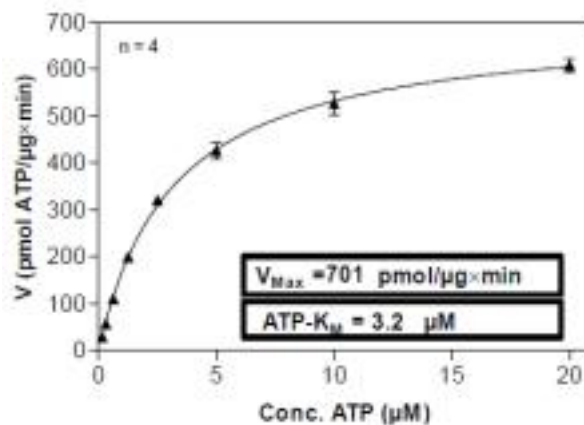
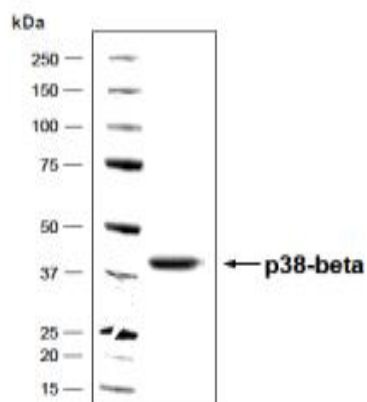
- Assay conditions:
60 mM HEPES-NaOH, pH 7.5
3 mM MgCl₂
3 mM MnCl₂
3 µM Na-orthovanadate
1.2 mM DTT
50 µg / ml PEG_{20,000}
ATP (variable)
Substrate: rec. ATF2, 200 µg / ml
p38-beta: 1.0 µg / ml
- Filter binding assay
MSFC membrane (Millipore)



Storage & Stability: Store in working aliquots at -80°C. **Avoid repeated freeze-thaw cycles.**

Determination of K_m value for ATP:

Coomassie stain:



NOT FOR HUMAN USE. FOR RESEARCH ONLY. NOT FOR DIAGNOSTIC OR THERAPEUTIC USE.



Cell Sciences®
 480 Neponset Street
 Bldg 12A
 Canton, MA 02021

Toll Free: 888-769-1246
 Phone: 781-828-0610
 Fax: 781-828-0542

E-mail: info@cellsciences.com
 Website: www.cellsciences.com