

MAP2K6

Recombinant Human Mitogen-activated Protein Kinase 6 Active GST

Catalog No.	CSI12120	Quantity:	50 µg
Alternate Names:	MAPKK6, MEK6, MKK6, PRKMK6, SAPKK3, protein kinase, mitogen-activated, kinase 6 (MAP kinase kinase 6)		
Description:	Human MAPKAPK3, full length, amino acids M ₁ -Q ₃₈₂ (as in GenBank entry NM_004653) *, untagged, expressed in <i>E. coli</i> . *Sequence may contain documented polymorphisms Detailed aa-sequence on request		
Concentration:	0.210 µg/µl		
Gene ID:	5608		
Protein Accession No:	NM_004653		
Source:	<i>E. coli</i> BL21 (DE3)		
Molecular Weight:	Theoretical MW _{Fusion Protein} : 43,324 Da		
Formulation:	50 mM HEPES pH 7.5 + 100 mM NaCl + 5 mM DTT, 20% glycerol		
Purification:	GST-Affinity Chromatography followed by cleavage of GST-tag		
Product Identity:	MAPKAPK3 was confirmed as MAPKAPK3 by mass spectroscopy LC-ESI-MS/MS		
Activation:	with MKK6 SDTD (GenBank accession No.: NM_002758.2) and p38-alpha (GenBank accession No.: NM_002031)		
Specific Activity:	188 pmol/µg×min		

Method for determination of K_m value and specific activity:

• Assay conditions:

60 mM HEPES-NaOH, pH 7.5

3 mM MgCl₂

3 mM MnCl₂

3 µM Na-orthovanadate

1.2 mM DTT

2.5 µg / 50 µl PEG_{20,000}

ATP (variable)

Substrate: tetra(LRRWSLG), 2.5 µg / 50 µl

MAPKAPK3: 100 ng / 50 µl

• Filter binding assay: MSPH membrane (Millipore)



Cell Sciences®
480 Neponset Street
Bldg 12A
Canton, MA 02021

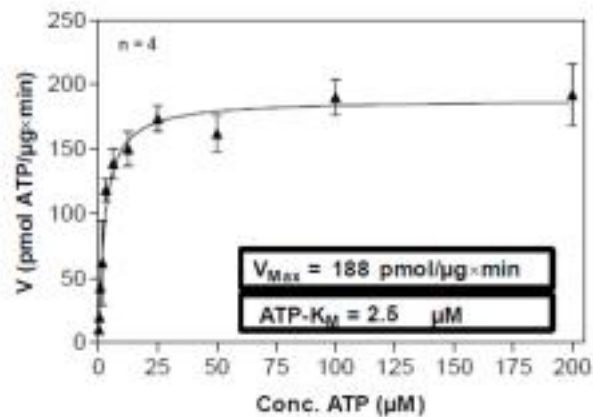
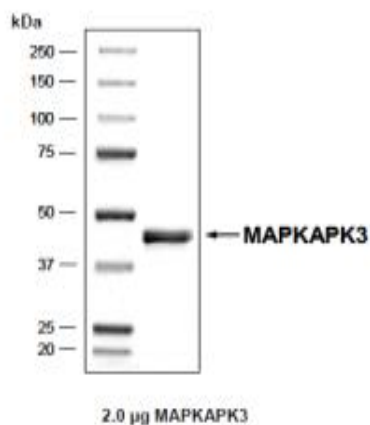
Toll Free: 888-769-1246
Phone: 781-828-0610
Fax: 781-828-0542

E-mail: info@cellsciences.com
Website: www.cellsciences.com

Storage & Stability: Store in working aliquots at -80°C . **Avoid repeated freeze-thaw cycles.**

Determination of K_m value for ATP:

Coomassie stain:



NOT FOR HUMAN USE. FOR RESEARCH ONLY. NOT FOR DIAGNOSTIC OR THERAPEUTIC USE.



Cell Sciences®
480 Neponset Street
Bldg 12A
Canton, MA 02021

Toll Free: 888-769-1246
Phone: 781-828-0610
Fax: 781-828-0542

E-mail: info@cellsciences.com
Website: www.cellsciences.com