

## PRKCQ

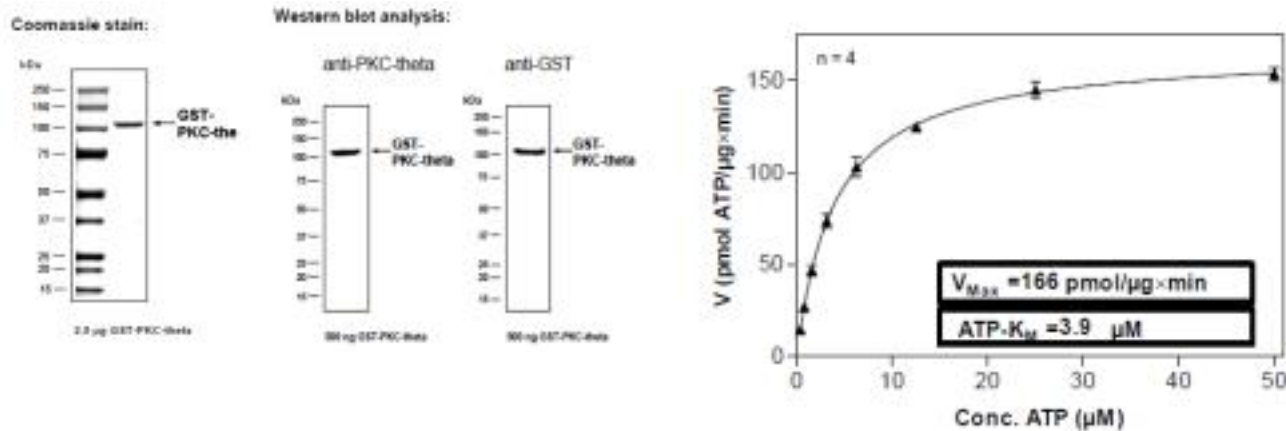
## Recombinant Human Protein Kinase C theta Active GST-His

<b>Catalog No.</b>	CSI12245	<b>Quantity:</b>	50 µg
<b>Alternate Names:</b>	PRKCT, nPKC-theta		
<b>Description:</b>	Human PKC-theta, Amino acids M <sub>1</sub> -S <sub>706</sub> (as in GenBank entry NM_006257)*, N-terminally fused to GST-FactorXa cleavage site, C-terminally fused to His <sub>6</sub> <b>*Sequence may contain documented polymorphisms</b> <b>Detailed sequence on request</b>		
<b>Concentration:</b>	0.273 µg/µl		
<b>Gene ID:</b>	5588		
<b>Protein Accession No:</b>	NM_006257		
<b>Source:</b>	Baculovirus infected Sf9 cells		
<b>Molecular Weight:</b>	Theoretical MW <sub>Fusion Protein</sub> : 109,677 Da		
<b>Formulation:</b>	50 mM Tris-HCl, pH 8.0 + 100 mM NaCl + 5 mM DTT + 4 mM reduced glutathione, 20% glycerol		
<b>Purification:</b>	One-step affinity purification using GSH-agarose		
<b>Product Identity:</b>	PKC-theta was confirmed as human PKC-theta by mass spectroscopy LC-ESI-MS/MS		
<b>Specific Activity:</b>	166 pmol/µg×min  Method for determination of Km value and specific activity: • Assay conditions: 60 mM HEPES-NaOH, pH 7.5 3 mM MgCl <sub>2</sub> 3 mM MnCl <sub>2</sub> 1 mM CaCl <sub>2</sub> 4 mM EDTA 3 µM Na-orthovanadate 5 µg / ml Phosphatidylserine 1 µg / ml 1.2 Dioleoyl-glycerol 1.2 mM DTT 50 µg / ml PEG <sub>20,000</sub> ATP (variable) Substrate: Histone H2B, 30 µg / ml Recombinant PKC-theta: 4.0 µg / ml • Filter binding assay MSFC membrane (Millipore)		



**Storage & Stability:** Store in working aliquots at -80°C. **Avoid repeated freeze-thaw cycles.**

## Determination of $K_m$ value for ATP:



NOT FOR HUMAN USE. FOR RESEARCH ONLY. NOT FOR DIAGNOSTIC OR THERAPEUTIC USE.



**Cell Sciences®**  
480 Neponset Street  
Bldg 12A  
Canton, MA 02021

Toll Free: 888-769-1246  
Phone: 781-828-0610  
Fax: 781-828-0542

E-mail: [info@cellsciences.com](mailto:info@cellsciences.com)  
Website: [www.cellsciences.com](http://www.cellsciences.com)