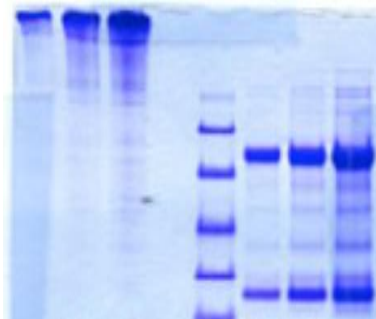


## IGM

### Native Human Rheumatoid Factor IgM, Plasma

<b>Catalog No.</b>	CSI13581A	<b>Quantity:</b>	250 µl
<b>Alternate Names:</b>	Immunoglobulin mu heavy chain, IgM		
<b>Description:</b>	Rheumatoid factor (RF) is the autoantibody, predominantly encountered as IgM, against the Fc portion of IgG which creates immune complexes that contribute to the disease process in rheumatoid arthritis, Sjogren's syndrome, Systemic lupus erythematosus (SLE) and viral infections. It is found in Epstein-Barr virus or Parvovirus infection and in 5 to 10% of healthy persons, especially the elderly. There is an association between rheumatoid factor and more persistently active synovitis, more joint damage, greater eventual disability and arthritis.		
<b>UniProt ID:</b>	P0DOX6		
<b>Source:</b>	Human plasma.		
<b>Molecular Weight:</b>	970 kDa (IgM)		
<b>Formulation:</b>	20 mM Sodium phosphate, 150 mM NaCl, pH 7.4 containing 0.09% NaN <sub>3</sub>		
<b>Purity:</b>	> 95% by SDS-PAGE		
<b>Extinction Coefficient:</b>	$E^{0.1\%}_{280nm} = 1.18$		
<b>Biological Activity:</b>	1000-2000 U/ml, by ELISA calibrated with the Rheumatoid Arthritis Serum, 1st British Standard NIBSC code: 64/002		
<b>Storage &amp; Stability:</b>	Store at 2-8°C		
<b>Infectious Disease Statement:</b>	Prepared from plasma shown to be non reactive for HBsAg, anti-HCV, anti-HBc, and negative for anti-HIV 1 & 2 by FDA-required tests.		

SDS-PAGE  
Non-reduced and reduced



NOT FOR HUMAN USE. FOR RESEARCH ONLY. NOT FOR DIAGNOSTIC OR THERAPEUTIC USE.