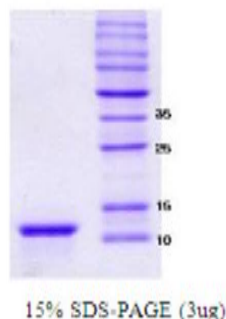


SNCA

Recombinant Human Synuclein alpha (112)

Catalog No.	CSI15593A CSI15593B	Quantity:	100 µg 500 µg
Alternate Names:	NACP, PARK1, PARK4, PD1, alpha synuclein, alpha-synuclein, alpha-synuclein isoform NACP140		
Description:	An alternatively spliced (103-129) form of alpha-synuclein. alpha-synuclein112 was cloned into an <i>E. coli</i> expression vector by RT-PCR.. The recombinant protein was purified to apparent homogeneity by taking advantage of the thermosolubility of the protein and by using conventional column chromatography techniques.		
Concentration:	1 mg/ml (determined by BCA assay)		
GeneID:	6622		
Protein Accession No:	P_000336.1		
Source:	<i>E. coli</i>		
Molecular Weight:	Weight 11.3 kDa (112 aa), confirmed by MALDI-TOF.		
Formulation:	Liquid. In 20 mM Tris-HCl buffer (pH 7.5) containing 0.1 M NaCl		
Purity:	> 95% by SDS - PAGE		
Amino Acid Sequence:	MDVFMKGLSK AKEGVVAAAE KTKQGVAEAA GKTKEGVLYV GSKTKEGVVH GVATVAEKTQ EQVTNVGGAV VTGVTAVAQK TVEGAGSIAA ATGFVKKDQL GKEGYQDYEP EA		
Storage & Stability:	Can be stored at +4°C short term (1-2 weeks). For long term storage, aliquot and store at -20°C or -80°C. Avoid repeated freezing and thawing cycles.		



NOT FOR HUMAN USE. FOR RESEARCH ONLY. NOT FOR DIAGNOSTIC OR THERAPEUTIC USE.



Cell Sciences®
480 Neponset Street
Bldg 12A
Canton, MA 02021

Toll Free: 888-769-1246
Phone: 781-828-0610
Fax: 781-828-0542

E-mail: info@cellsciences.com
Website: www.cellsciences.com