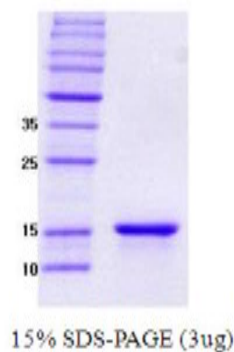


## SNCG

## Recombinant Human Synuclein gamma

<b>Catalog No.</b>	CSI15598A CSI15598B	<b>Quantity:</b>	100 µg 500 µg
<b>Alternate Names:</b>	BCSG1, SR, breast cancer-specific protein 1, persyn, synoretin, synuclein, gamma (breast cancer-specific gene 1)		
<b>Description:</b>	Gamma-Synuclein(Originally known as a breast cancer specific gene product, BCSG1) is an acidic neuronal protein of 127 amino acids. The protein coding region of gamma-Synuclein was amplified by RT-PCR and cloned into an <i>E.coli</i> expression vector. Gamma-Synuclein was overexpressed in <i>E. coli</i> and purified to apparent homogeneity by taking advantage of the thermosolubility of the protein and by using conventional column chromatography techniques.		
<b>Concentration:</b>	1 mg/ml (determined by BCA assay)		
<b>Gene ID:</b>	6623		
<b>Protein Accession No:</b>	NP_003078		
<b>Source:</b>	<i>E. coli</i>		
<b>Molecular Weight:</b>	13.3 kDa (127 aa), confirmed by MALDI-TOF. (Molecular weight on SDS-PAGE will appear higher)		
<b>Formulation:</b>	Liquid. In 20 mM Tris-HCl buffer (pH 7.5) containing 0.1 M NaCl		
<b>Purity:</b>	> 95% by SDS - PAGE		
<b>Amino Acid Sequence:</b>	MDVFKKGFSI AKEGVVGAVE KTKQGVTEAA EKTKEGVMYV GAKTKENVVQ SVTSVAEKTQ EQANAVSEAV VSSVNTVATK TVEEAENIAV TSGVVRKEDL RPSAPQQEGV ASKEKEEVAE EAQSGGD		
<b>Storage &amp; Stability:</b>	Can be stored at +4°C short term (1-2 weeks). For long term storage, aliquot and store at -20°C or -80°C. <b>Avoid repeated freezing and thawing cycles.</b>		



NOT FOR HUMAN USE. FOR RESEARCH ONLY. NOT FOR DIAGNOSTIC OR THERAPEUTIC USE.



**Cell Sciences®**  
480 Neponset Street  
Bldg 12A  
Canton, MA 02021

Toll Free: 888-769-1246  
Phone: 781-828-0610  
Fax: 781-828-0542

E-mail: [info@cellsciences.com](mailto:info@cellsciences.com)  
Website: [www.cellsciences.com](http://www.cellsciences.com)