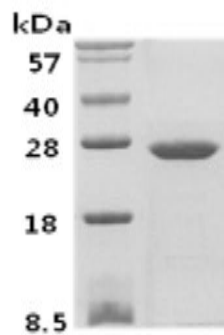


PSPH

Recombinant Human Phosphoserine Phosphatase (aa 1-225)

Catalog No.	CSI15625A CSI15625B	Quantity:	100 µg 500 µg
Alternate Names:	PSPH, PSP		
Description:	Human Phosphoserine phosphatase (hPSP) is an important enzyme in the phosphorylated pathway of serine biosynthesis, which contributes a major portion of the endogenous L-serine. Similar to known L-3-phosphoserine phosphatases, it catalyzed the Mg^{2+} General references: -dependent hydrolysis of L-phosphoserine and an exchange reaction between L-serine and L-phosphoserine. Recently, its complex structures reveal that the open-closed environmental change of the active site, generated by local rearrangement of the alpha-helical bundle domain, is important to substrate recognition and hydrolysis. Recombinant human hPSP was overexpressed in <i>E. coli</i> and purified by conventional chromatography.		
Concentration:	1 mg/ml (determined by Bradford assay)		
GeneID:	5723		
Protein Accession No:	NP_004568		
Source:	<i>E. coli</i>		
Molecular Weight:	25 kDa (225 aa), confirmed by MALDI-TOF		
Formulation:	Liquid. in 20 mM HEPES(pH 7.5) containing 1 mM DTT, 100 mM KCl ₂		
Purity:	> 95% by SDS - PAGE		
Endotoxin Level:	< 1.0 EU per 1 µg of protein (determined by LAL method)		
Amino Acid Sequence:	MVSHSELRKL FYSADAVCFD VDSTVIREEG IDELAKICGV EDAVSEMTRR AMGGAVPFKA ALTERLALIQ PSREQVQRLI AEQPPHLTPG IRELVSRLQE RNVQVFLISG GFRSIVEHVA SKLNIPATNV FANRLKFYFN GEYAGFDETQ PTAESGGK GK VIKLLKEKFH FKKIIMIGDG ATDMEACPPA DAFIGFGGNV IRQQVKDNAK WYITDFVELL GELEE		
Storage & Stability:	Can be stored at +4°C short term (1-2 weeks). For long term storage, aliquot and store at -20°C or -80°C. Avoid repeated freezing and thawing cycles.		





14% SDS-PAGE (3 μ g)

NOT FOR HUMAN USE. FOR RESEARCH ONLY. NOT FOR DIAGNOSTIC OR THERAPEUTIC USE.



Cell Sciences®
480 Neponset Street
Bldg 12A
Canton, MA 02021

Toll Free: 888-769-1246
Phone: 781-828-0610
Fax: 781-828-0542

E-mail: info@cellsciences.com
Website: www.cellsciences.com