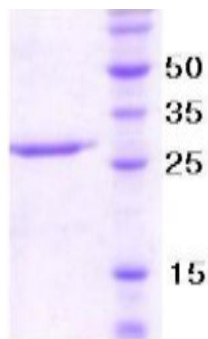


## NCR1

### Recombinant Human NCR1/NKp46 (aa 22-255)

<b>Catalog No.</b>	CSI15632A CSI15632B	<b>Quantity:</b>	100 µg 500 µg
<b>Alternate Names:</b>	CD335, LY94, NK-p46, NKP46, lymphocyte antigen 94 homolog (activating NK-receptor; NK-p46)		
<b>Description:</b>	A natural cytotoxicity receptor (NCR) NKp46 has been shown to represent a novel NK cell-specific molecule involved in human NK cell activation. The natural cytotoxicity receptors(NCRs) are a recently characterized family of Ig-like activation receptors that appear to be major triggering receptors in tumor cell recognition. The three known NCRs include NKp46 and NKp30, which are expressed on circulating NK cells, and NKp44, which is expressed only on activating NK cells. NKp46 has been implicated in NK cell-mediated lysis of several autologous tumor cells and pathogen-infected cell lines. NKp46 has two extracellular Ig-like domains followed by a ~40 residue stalk region, a type I transmembrane domain, and a short cytoplasmic tail. The extracellular Ig-like domain of NKp46( 22-255aa) was overexpressed in <i>E. coli</i> , and purified by FPLC gel-filtration chromatography, after refolding of the isolated inclusion bodies in a redox buffer.		
<b>Concentration:</b>	1 mg/ml (determined by Bradford assay)		
<b>GeneID:</b>	9437		
<b>Protein Accession No:</b>	NP_004820		
<b>Source:</b>	<i>E. coli</i>		
<b>Molecular Weight:</b>	26.6 kDa (235 aa), confirmed by MALDI-TOF.		
<b>Formulation:</b>	Liquid. In phosphate buffered saline (pH7.4), 1mM EDTA		
<b>Purity:</b>	> 95% by SDS - PAGE		
<b>Amino Acid Sequence:</b>	MQQQTLPKPF IWAEPHFMVP KEKQVTICCCQ GNYGAVEYQL HFEGSLFAVD RPKPPERINK VKFYIPDMNS RMAGQYSCIY RVGELWSEPS NLLDLVVTEM YDTPTLSVHP GPEVISGEEV TFYCRLDTAT SMFLLLKEGR SSHVQRGYGK VQAEFPLGPV TTAHRGTYRX FGSYNNHAWFS FPSEPVKLLV TGDIENTSLA PEDPTFSADT WGTYLLTTET GLQKDHALLWD HTAQN		
<b>Storage &amp; Stability:</b>	Can be stored at +4°C short term (1-2 weeks). For long term storage, aliquot and store at -20°C or -80°C. <b>Avoid repeated freezing and thawing cycles.</b>		





15% SDS-PAGE (3ug)

NOT FOR HUMAN USE. FOR RESEARCH ONLY. NOT FOR DIAGNOSTIC OR THERAPEUTIC USE.



**Cell Sciences®**  
480 Neponset Street  
Bldg 12A  
Canton, MA 02021

Toll Free: 888-769-1246  
Phone: 781-828-0610  
Fax: 781-828-0542

E-mail: [info@cellsciences.com](mailto:info@cellsciences.com)  
Website: [www.cellsciences.com](http://www.cellsciences.com)