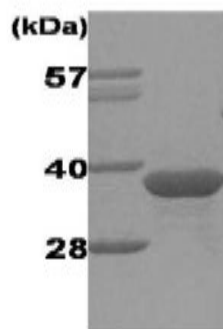


## GMNN

### Recombinant Human Geminin His

<b>Catalog No.</b>	CSI15641A CSI15641B	<b>Quantity:</b>	100 µg 500 µg
<b>Alternate Names:</b>	Gem, RP3-369A17.3, geminin		
<b>Description:</b>	Geminin is a 25 kDa protein, which inhibits DNA replication and is degraded during the mitotic phase of the cell cycle. Geminin controls replication by binding to the licensing factor Cdt1, and is involved in neural differentiation. In addition, geminin directly interacts with Six3 and Hox homeodomain proteins during embryogenesis and inhibits their functions.		
<b>Concentration:</b>	1 mg/ml (determined by Bradford assay)		
<b>GenelD:</b>	51053		
<b>Protein Accession No:</b>	NP_056979		
<b>Source:</b>	<i>E. coli</i>		
<b>Molecular Weight:</b>	27.6kDa (245aa), confirmed by MALDI-TOF.		
<b>Formulation:</b>	Liquid. In 20mM Tris (pH 8.0), 100mM NaCl, 10% Glycerol		
<b>Purity:</b>	> 95% by SDS - PAGE		
<b>Amino Acid Sequence:</b>	MRGSHHHHHH GMASMTGGQQ MGRDLYDDDD KDRWGSMNPS MKQKQEEIKE NIKSSVPRR TLKMIQPSAS GSLVGRENEL SAGLSKRKHR NDHLTSTSS PGVIVPESS NKNLGGVTQE SFDLMIKENP SSQYWKEVAE KRRKALYEAL KENEKLHKEI EQKDNEIARL KKENKELAEV AEHVQYMAEL IERLNGEPLD NFESLDNQEF DSEETVEDS LVEDSEIGTC AEGTVSSSTD AKPCI		
<b>Application:</b>	SDS-PAGE		
<b>Storage &amp; Stability:</b>	Can be stored at +4°C short term (1-2 weeks). For long term storage, aliquot and store at -20°C or -80°C. <b>Avoid repeated freezing and thawing cycles.</b>		



15% SDS-PAGE (3µg)

NOT FOR HUMAN USE. FOR RESEARCH ONLY. NOT FOR DIAGNOSTIC OR THERAPEUTIC USE.



**Cell Sciences®**  
480 Neponset Street  
Bldg 12A  
Canton, MA 02021

Toll Free: 888-769-1246  
Phone: 781-828-0610  
Fax: 781-828-0542

E-mail: [info@cellsciences.com](mailto:info@cellsciences.com)  
Website: [www.cellsciences.com](http://www.cellsciences.com)