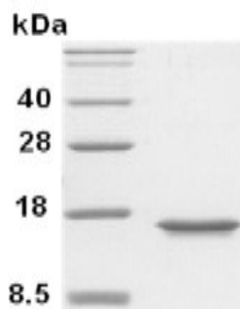


MIF

Recombinant Human Macrophage Migration Inhibitory Factor (aa 1-115) His

Catalog No.	CSI15656A CSI15656B	Quantity:	100 µg 500 µg
Alternate Names:	GIF, GLIF, MMIF, glycosylation-inhibiting factor, phenylpyruvate tautomerase		
Description:	The cytokine Macrophage migration inhibitory factor (MIF) has been identified to be secreted by the pituitary gland and the monocyte/macrophage and to play an important role in endotoxic shock. MIF has the unique property of being released from macrophages and T cells in response to physiological concentrations of glucocorticoids. The secretion of MIF is tightly regulated and decreases at high, anti-inflammatory steroid concentration. Recombinant human MIF, fused to His-tag at N-terminus, was cloned into an <i>E. coli</i> expression vector and was purified to apparent homogeneity by using conventional column chromatography techniques.		
Concentration:	1 mg/ml (determined by Bradford assay)		
GeneID:	4282		
Protein Accession No:	NP_002406		
Source:	<i>E. coli</i>		
Molecular Weight:	16.6 kDa (151 aa), confirmed by MALDI-TOF		
Formulation:	Liquid. In phosphate-buffered saline (pH 7.4)		
Purity:	> 95% by SDS - PAGE		
Endotoxin Level:	< 1.0 EU per 1 µg of protein (determined by LAL method)		
Amino Acid Sequence:	MRGSHHHHHH GMASMTGGQQ MGRDLYDDDD kDaRWGSMMPMF IVNTNVPRAS VPDGFLELT QQLAQATGKP PQYIAVHVVP DQLMAFGGSS EPCALCSLHS IGKIGGAQNR SYSKLLCGLL AERLRISPDR VYINYYDMNA ANVGWNNSTF A		
Storage & Stability:	Can be stored at +4°C short term (1-2 weeks). For long term storage, aliquot and store at -20°C or -80°C. Avoid repeated freezing and thawing cycles.		



15% SDS-PAGE (3µg)

NOT FOR HUMAN USE. FOR RESEARCH ONLY. NOT FOR DIAGNOSTIC OR THERAPEUTIC USE.



Cell Sciences®
480 Neponset Street
Bldg 12A
Canton, MA 02021

Toll Free: 888-769-1246
Phone: 781-828-0610
Fax: 781-828-0542

E-mail: info@cellsciences.com
Website: www.cellsciences.com