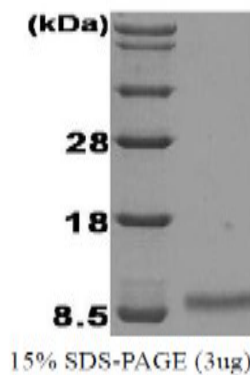


IGF1

Recombinant Human Insulin-like growth factor-1 (aa 49-118)

Catalog No.	CSI15657A CSI15657B	Quantity:	100 µg 500 µg
Alternate Names:	IGF1A, IGF1, insulin-like growth factor 1, MGF, IGF-IA, IGF-IB, somatomedin-C, mechano growth factor, insulin-like growth factor IA, insulin-like growth factor IB		
Description:	The Insulin-like growth factor-1 (IGF-1) is mitogenic polypeptide growth factors that stimulate the proliferation and survival of various cell types including muscle, bone, and cartilage tissue in vitro. IGF-1 is predominantly produced by the liver, although a variety of tissues produce the IGFs at distinctive times. The IGF-1 belongs to the insulin gene family, which also contains insulin and relaxin. The IGF-1 is similar by structure and function to insulin, but has a much higher growth-promoting activity than insulin. This recombinant human IGF-I is globular protein containing 70 amino acids, and 3 intra-molecular disulfide bonds. Recombinant IGF-1 was expressed in <i>E.coli</i> and purified by conventional chromatography, after refolding of the isolated inclusion bodies in a renaturation buffer.		
Concentration:	1 mg/ml (determined by Bradford assay)		
GenelD:	3479		
Protein Accession No:	NP_000609		
Source:	<i>E. coli</i>		
Molecular Weight:	7.7kDa (71aa), confirmed by MALDI-TOF		
Formulation:	Liquid. In phosphate-buffered Saline(pH 7.4) containing 10% glycerol		
Purity:	> 95% by SDS - PAGE		
Biological Activity:	The ED ₅₀ for this effect is < 3.6 ng/ml. Measured in a cell proliferation assay using MCF7 cell.		
Amino Acid Sequence:	MGPETLCGAE LVDALQFVCG DRGFYFNKPT GYGSSSRRAP QTGIVDECCF RSCDLRRLEM YCAPLKPAKS A		
Activity Assay:	<ol style="list-style-type: none"> 1. Cell line: MCF7 (human) 2. Maintenance Condition: RPMI 1640 containing 10% FBS 3. Assay Medium: serum free RPMI 1640 4. Cell Density: 2 x 10⁴ cells/well (96 well plate, final volume 100ul) 5. Serum Free Starvation: 24hr with RPMI1640 6. Incubation Time: 40 hr (after sample treatment) 7. Concentration Range: 0.39ng/ml - 25ng/ml 8. Detection Method : BrdU assay 		
Storage & Stability:	Can be stored at +4°C short term (1-2 weeks). For long term storage, aliquot and store at -20°C or -80°C. Avoid repeated freezing and thawing cycles.		





NOT FOR HUMAN USE. FOR RESEARCH ONLY. NOT FOR DIAGNOSTIC OR THERAPEUTIC USE.



Cell Sciences®
480 Neponset Street
Bldg 12A
Canton, MA 02021

Toll Free: 888-769-1246
Phone: 781-828-0610
Fax: 781-828-0542

E-mail: info@cellsciences.com
Website: www.cellsciences.com