

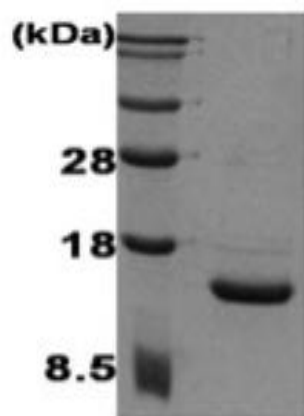
## IL2

### Recombinant Human IL-2 (C145S) (aa 22-153)

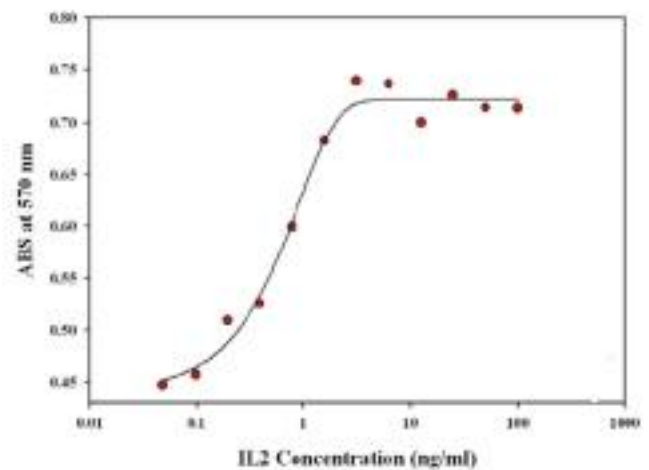
<b>Catalog No.</b>	CSI15661A CSI15661B	<b>Quantity:</b>	100 µg 500 µg
<b>Alternate Names:</b>	interleukin-2, aldesleukin, T cell growth factor, involved in regulation of T-cell clonal expansion		
<b>Description:</b>	IL-2, also known as T cell growth factor (TCGF), is an immunoregulatory lymphokine produced by T-cells in response to antigenic or mitogenic stimulation. IL-2/IL-2R signaling is required for T-cell proliferation and other fundamental functions which are essential for the immune response. IL-2 stimulates growth and differentiation of B-cells, NK cells, lymphokine activated killer cells, monocytes, macrophages and oligodendrocytes. This recombinant human IL-2 is a 15.4 kDa protein, containing 133 amino acid residues including one intra chain disulfide bond. Recombinant human IL-2 was overexpressed in <i>E. coli</i> and purified by conventional chromatography		
<b>Concentration:</b>	0.5 mg/ml (determined by BCA assay)		
<b>Gene ID:</b>	3558		
<b>Protein Accession No:</b>	NP_000577		
<b>Molecular Weight:</b>	15.4 kDa (133 aa), confirmed by MALDI-TOF		
<b>Formulation:</b>	Liquid. 20mM MES buffer (pH5.0)		
<b>Purity:</b>	> 95% by SDS - PAGE		
<b>Endotoxin Level:</b>	< 1.0 EU per 1 ug of protein (determined by LAL method)		
<b>Assay Activity:</b>	Cell line: CTLL2 (mouse cytotoxic Tcell) Maintenance Condition: 10% FBS RPMI 1640 with hIL2 Assay medium: 10% FBS RPMI 1640 without hIL2 Cell Density: $2 \times 10^4$ cells/well (96 well plate, final volume 100ul) Starvation: 24hr, Assay medium Incubation Time: 24 hr (after sample treatment) Concentration Range: 0.039 ng/ml - 40 ng/ml Detection method: MTT assay		



- Biological Activity:** Measured in a cell proliferation assay using CTLL2 mouse cytotoxic T cells. The ED50 for this effect is < 1.5 ng/ml.
- Amino Acid Sequence:** MPTSSSTKKT QLQLEHLLLD LQMILNGINN YKNPKLTRML TFKFYMPKKA  
TELKHLQCLE EELKPLEEVL NLAQSKNFHL RPRDLISNIN VIVLELKGSE  
TTFMCEYADE TATIVEFLNR WITFSQSIIS TLT
- Applications:** SDS-PAGE
- Storage & Stability:** Can be stored at +4°C short term (1-2 weeks). For long term storage, aliquot and store at -20°C or -80°C. **Avoid repeated freezing and thawing cycles.**



15% SDS-PAGE (3ug)



NOT FOR HUMAN USE. FOR RESEARCH ONLY. NOT FOR DIAGNOSTIC OR THERAPEUTIC USE.



**Cell Sciences®**  
480 Neponset Street  
Bldg 12A  
Canton, MA 02021

Toll Free: 888-769-1246  
Phone: 781-828-0610  
Fax: 781-828-0542

E-mail: [info@cellsciences.com](mailto:info@cellsciences.com)  
Website: [www.cellsciences.com](http://www.cellsciences.com)