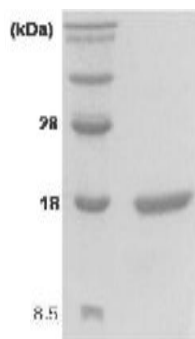


KITLG

Recombinant Human Stem Cell Factor (aa 26-189)

Catalog No.	CSI15667A CSI15667B	Quantity:	100 µg 500 µg
Alternate Names:	KITLG, Kitl, KL-1, MGF, SF, SHEP7		
Description:	Stem Cell Factor (SCF) is a glycoprotein that plays a key role in hematopoiesis acting both as a positive and negative regulator, often in synergy with other cytokines. SCF binds to and activates the SCF receptor (SCFR), a receptor tyrosine kinase. SCF stimulates the proliferation of mast cells and is able to augment the proliferation of both myeloid and lymphoid hematopoietic progenitors in bone marrow culture. It also mediates cell-cell adhesion and acts synergistically with other cytokine. Recombinant human SCF was expressed in <i>E. coli</i> and purified by conventional column chromatography, after refolding of the isolated inclusion bodies in a renaturation buffer.		
Concentration:	1 mg/ml (determined by Bradford assay)		
GeneID:	4254		
Protein Accession No:	NP_000890		
Source:	<i>E. coli</i>		
Molecular Weight:	18.5 kDa (165 aa), confirmed by MALDI-TOF		
Formulation:	Liquid. In Phosphate buffer saline (pH 7.4)		
Purity:	> 95% by SDS - PAGE		
Amino Acid Sequence:	MEGICRNRVT NNVKDVTKLV ANLPKDYMIT LKYVPGMDVL PSHCWISEMV VQLSDSLTDL LDKFSNISEG LSNYSIIDKL VNIVDDLVEC VKENSSKDLK KSFKSPEPRL FTPEEFFRIF NRSIDAFKDF VVASETSDCV VSSTLSPEKD SRVSVTKPFM LPPVA		
Application:	SDS-PAGE		
Storage & Stability:	Can be stored at +4°C short term (1-2 weeks). For long term storage, aliquot and store at -20°C or -80°C. Avoid repeated freezing and thawing cycles.		





15% SDS-PAGE (3ug)

NOT FOR HUMAN USE. FOR RESEARCH ONLY. NOT FOR DIAGNOSTIC OR THERAPEUTIC USE.



Cell Sciences®
480 Neponset Street
Bldg 12A
Canton, MA 02021

Toll Free: 888-769-1246
Phone: 781-828-0610
Fax: 781-828-0542

E-mail: info@cellsciences.com
Website: www.cellsciences.com