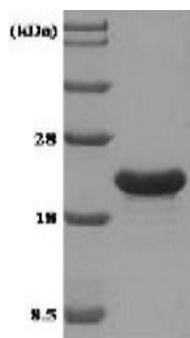


## TPD52L1

### Recombinant Human Tumor Protein D52-like 1 (aa 21-151) His

<b>Catalog No.</b>	CSI15671A CSI15671B	<b>Quantity:</b>	100 µg 500 µg
<b>Alternate Names:</b>	D53, hD53, TPD52L2		
<b>Description:</b>	TPD52L1(hD53, hD53L1) is a member of D52 gene family and overexpressed in human breast carcinoma. This protein contains coiled-coil motif, which is responsible for homo- and heteromeric interaction, and may be a regulator of cell proliferation and calcium-mediated signal transduction. TPD52L1, fused to His-tag at N-terminus, was overexpressed in <i>E. coli</i> and purified by using conventional chromatography techniques.		
<b>Concentration:</b>	1 mg/ml (determined by Bradford assay)		
<b>GenelD:</b>	7164		
<b>Protein Accession No:</b>	NP_001003397		
<b>Source:</b>	<i>E. coli</i>		
<b>Molecular Weight:</b>	16.8 kDa (151 aa), confirmed by MALDI-TOF		
<b>Formulation:</b>	Liquid. In PBS (pH 7.4)		
<b>Purity:</b>	> 90% by SDS - PAGE		
<b>Amino Acid Sequence:</b>	MGSSHHHHHH SSGLVPRGSH MEAQAQGLLE TEPLQGTDED AVASADFSSM LSEEEKEELK AELVQLEDEI TTLRQVLSAK ERHLVEIKQK LGMNLMNELK QNFSKSWHDM QTTTAYKKTH ETLSHAGQKA TAAFSNVGTA ISKKFGDMRR K		
<b>Application:</b>	SDS-PAGE		
<b>Storage &amp; Stability:</b>	Can be stored at +4°C short term (1-2 weeks). For long term storage, aliquot and store at -20°C or -80°C. <b>Avoid repeated freezing and thawing cycles.</b>		



15% SDS-PAGE (3ug)

NOT FOR HUMAN USE. FOR RESEARCH ONLY. NOT FOR DIAGNOSTIC OR THERAPEUTIC USE.



**Cell Sciences®**  
480 Neponset Street  
Bldg 12A  
Canton, MA 02021

Toll Free: 888-769-1246  
Phone: 781-828-0610  
Fax: 781-828-0542

E-mail: [info@cellsciences.com](mailto:info@cellsciences.com)  
Website: [www.cellsciences.com](http://www.cellsciences.com)